

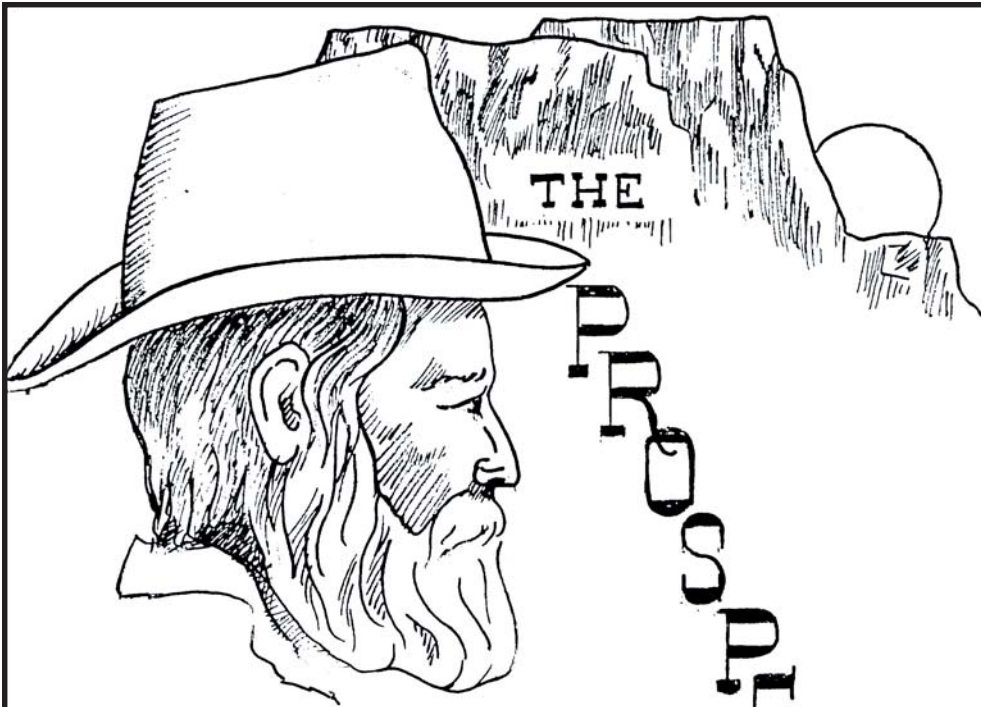
LINCOLN WHITE PINE CLARK LYON

ORMSBY

PERSHING

LANDER

CHURCHILL



THE
 PROSPECTOR

PUBLICATION OF THE
 CLARK COUNTY NEVADA GENEALOGICAL SOCIETY
 LAS VEGAS, NEVADA

JUNE 1987

VOL. 7 - No. 2

DOUGLAS WASHOE NYE ELKO STOREY

HUMBOLDT

EUREKA

ESMERALDA

MINERAL

The CLARK COUNTY NEVADA GENEALOGICAL SOCIETY (CCNGS) is a non-profit organization under Sec. 501 (c) (3) of the Internal Revenue Code. The Society meets regularly the second Tuesday of each month in the Drawbridge Room of Commercial Center, 900 E. Karen, Suite A-210, at 7:00 p.m. with a business meeting, guest speaker, and refreshments. The purpose of these meetings is for instruction on how to collect, preserve, and publish genealogical, biographical, historical, and geographical materials. All correspondence with the Society should be addressed to: Clark County Nevada Genealogical Society, Post Office Box 1929, Las Vegas, NV 89125.

Membership dues - per year - are as follows:

Single Membership	\$ 10.00
Life Membership	\$120.00
Family Membership (Husband and Wife).	\$ 12.00
Subscriber Membership (Quarterly is mailed)	\$ 5.00

A Membership List is included in each December edition of THE PROSPECTOR. New members are listed in each of the other three editions.

THE PROSPECTOR, the quarterly publication of the CCNGS, is published each March, June, September, and December. Deadlines for submitting material for publication are:

- 15 February for the March issue
- 15 May for the June issue
- 15 August for the September issue
- 15 November for the December issue

This quarterly is free with membership; for non-members it is available for \$1.50 per copy. Back copies of THE PROSPECTOR are available for \$1.50 per copy.

Queries are free to CCNGS members--\$1 for non-members. A limit of three queries from each submitter will be printed in each issue of THE PROSPECTOR. Queries must be resubmitted in order to appear again.

A membership copy of THE PROSPECTOR which is mailed but returned by the Postal Service for lack of a current or good address, will not be remailed until a remailing fee of \$1.50 is paid. Please check our Membership List to ensure we have your correct address. If you move, please advise the Membership Chairman and the Editor of your new address.

THE PROSPECTOR is published for genealogists and persons interested in family and historical research, and for the purpose of receiving and collecting historical and genealogical records. The Society accepts no responsibility for errors in data received and published.

It is the desire of the Society to compile for printing in this quarterly, original material when possible, supplementing this with other records--published or unpublished--of interest to the readers; to include brief family genealogies, Bible records, book reviews, ancestor charts, queries, old letters, vital statistics, census records, county records, cemetery records, and articles on local history and genealogy. It is also intended that the quarterly be balanced with articles reflecting Western, Nevada, and Clark County content, and with articles connected with, or of particular interest to, CCNGS members. Objections to, or support of, this policy may be made to the Editor or other officers. Material of this nature is continually being solicited from members and non-members.

CLARK COUNTY NEVADA
GENEALOGICAL SOCIETY

Founded and Chartered 1976

THE PROSPECTOR

Volume 7 - No. 2

June 1987

TABLE OF CONTENTS

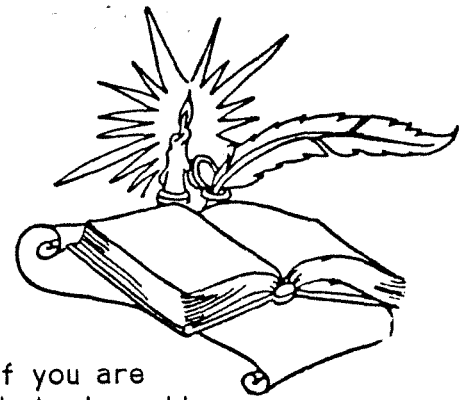
Society Officers	i
Editor's Notes	ii
The Lighter Side of Genealogy.	ii
From the President's Pen	1
Facts About Folks.	2
Notes and Announcements.	2
Changes and Additions to Membership List	2
Immigration Passenger Lists for the Port of Galveston.	3
Library News	6
I Can't Find Them in the Census - But I Know They Were There	7
Names and Nicknames.	9
Abbreviations of First Names	11
Queries.	12
How to Locate Records of Closed or Defunct Churches.	14
Information Obtainable from Gravestones.	15
CCNGS Calendar of Upcoming Events.	17

"PRESERVING FOR POSTERITY"

SOCIETY OFFICERS AND COMMITTEES
1986-1987

PRESIDENT.	Patricia SAYE ZUBIA
VICE-PRESIDENT	Linda ROBINSON MCEWEN
SECRETARY.	Donna GILL HARVEY
TREASURER.	Edith JOHNSON KRAEMER
DIRECTOR/REPRESENTATIVE.	Frank LANG
PROGRAM DIRECTOR	
EDITOR	Boots NORGAARD PARKER
HISTORIAN.	Joyce KELLEY MORRIS
HOSPITALITY.	Madonna DOSS MCCARTHY
MEMBERSHIP	Edith JOHNSON KRAEMER
PUBLICITY DIRECTOR	Joyce KELLEY MORRIS
REFRESHMENTS	Anne ADAMS

Editor's Notes....



I want to welcome all of the new and rejoining members to CCGS.

For many of our members, now is vacation time.

As you hit the road, have a safe and prosperous trip. If you are working on your genealogy (it seems that most of us do that--I really don't think of it as work, but enjoyment!) on the trip, remember that many places have special summer hours, and often many more people using the resources, so plan your time and energy accordingly.

I'm looking forward to our Fun Functions this summer - getting to know new members and visiting with our regular members on a completely social basis. Besides, I really love Pot Luck dinners--we get to try so many really good dishes that people prepare. And the Silent Auction in August will be a new experience for me.

The project of cataloging the wills of Clark County is exciting to me. I think it's a good opportunity for our society to prove to the rest of the country that we are a serious organization, and that we do have records and history in Las Vegas and Southern Nevada that can be of help to other genealogists.

I am still looking for more members who would like to help with or have ideas for THE PROSPECTOR. I'd like to get a 'Computer Corner' for our 'Library Notes' section--so, if there is someone out there who would like to get that going, or help me get it going, I certainly would appreciate it. If anyone has ideas regarding material, please get in touch with me. And not ignoring the people who have already given me material and ideas -- THANKS!!

Continuing thanks to the members of Cadette Girl Scout Troop 361 who help get this quarterly done. Sometimes the hours and circumstances they work under are a little strange, but they still do a 'bang-up' job. THANKS!

Boots Parker

Born Loser





CLARK COUNTY NEVADA GENEALOGICAL SOCIETY

P.O. BOX 1929
LAS VEGAS, NEVADA 89125

FROM THE PRESIDENT'S PEN.....

Well, here it is summertime again. The kids are out of school, and you have had a hard year & it is time for you to take a vacation to get away from it all, to get some rest. Then when you get home, it is time to rest from your vacation, but instead you have to go back to work!!!

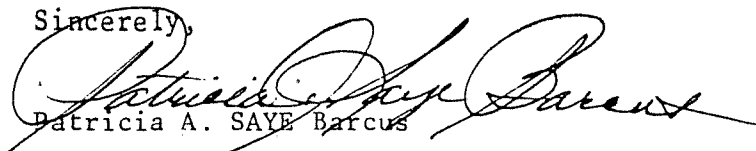
Now if you are a GENEALOGY NUT your work is just beginning. Remember to take your camera, tape recorder and plenty of film & tapes. I, myself am going on a vacation this year. I am attending my 20 year class reunion in Broadus, Montana. I am stopping in Casper & Sheridan, Wyo., then on to Billings, Miles City (the town I was born in) & then to Broadus. Each of these stops I am making will be at relatives. I'll be gone from June 22nd and back in town on July 7th, and I can't wait to get away, to RELAX? HA!

I can just hear it now, they are all saying, "Oh no, here comes Patricia the Genealogy Nut, she's such a snoop, always asking questions. Have you got that %!\$ç#@! tape recorder going, I'm not saying anything until you turn that thing off!" But, I suppose none of you know what I am talking about, do you? Have you ever stopped to think that those which are always giving you a hard time are always those first in line to find out what came out of all that "SNOOPING"????

Genealogists are a strange breed of people, when the BUG GET'S THEM, they are goners. When they go on trips they pack cameras, film, recorders, tapes & you name it. If it has to do with genealogy, it goes with you. Then when you get to where you are going, surprise!!! you don't have any clothes. "Oh! honey is that what was in that suitcase I took out of the trunk to make room for my box a genealogy things." That virus or BUG that bit you causes you to forget about everything, you are in a daze, all you want to do is to go to the cemetery, take pictures of gravesites, & stones, you forget that your spouse and children are even with you. I do not think they have come up with a cure yet, so be very careful this summer, I want each & everyone of you back to our meetings and the great programs we have coming up. Drive careful & try not to get very sick.

A serious note. I would like to thank Frank Lang, Membership Representative, for taking the time of taking his telephone poll. This poll brought a great many things to the attention of the Board of Directors. This is exactly what we were wanting when we made this position available, and Frank you are doing a great job. Keep up the good work, we really appreciate it. We also appreciate the fact there are more & more people getting involved and helping more. Thank you to all of you.

Sincerely,



Patricia A. SAYE Barcus

Facts about folks

WELCOME to all NEW MEMBERS and to FORMER MEMBERS who have REJOINED us. We hope you will join us for our meetings and programs as often as possible. We have several Fun Functions (see inside back cover) planned, so we hope to see you there and get acquainted. We're also having a really top-priority project this year, and we hope you'll join us in accomplishing it.

Please submit a copy of your ancestor charts for our files as soon as possible. You never know when you'll find - or be found by - a relative.

MEMBERS -- Your 1986-87 dues may be "overdue". Please verify your dues renewal date with our Treasurer/Membership Chairman, Edie Kraemer.

ATTENTION ALL MEMBERS: The CCNGS Surname List is now available for \$3.00. You may purchase it at one of our meetings. If you wish to purchase the Surname List and have it mailed to you, send a check for \$3.50 (made out to CCNGS) to the Editor.

PLEASE MAKE THE FOLLOWING ADDITIONS AND CHANGES TO YOUR CURRENT MEMBERSHIP LIST (attached to the December, 1986 copy of The Prospector). Everyone, please check your information on your copy for errors and report them to the Editor, Boots Parker, as soon as possible.

<u>No.</u>	<u>Name</u>	<u>Phone</u>	<u>Address</u>	<u>ZIP</u>
167	ACREE, Patricia		4328 Fortune Ave., LV	89107
160	BYRGE, Elmer --correction of spelling			
166	DAWD, Walter & Ruth			
164	JARNBERG, Carl		3111 S. Valley View, Suite A206, LV	89102
77	KEENE, Roberta	293-3568	835 Bonita Pl., Boulder City	89005
161	ROCKWELL, Donald		3364 Lost Hills Dr., LV	89122
165	SANDS, Judy	795-2296	5255 Tamarus, #A, LV	89119
162	ZEE DYKE, Leonard Edna	363-2923	1112 Pagosa Ave., LV	89128

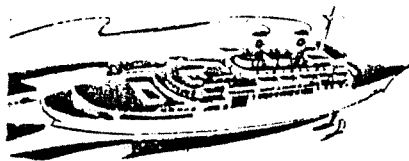
OBITUARY

Forrest Baker, a former member of CCNGS, died January 16, 1987 at a local hospital. Born in Dayton, OH, he was 77 years old.

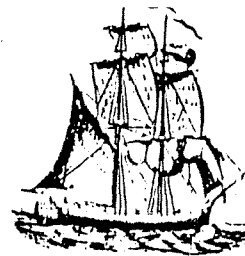
Thanks to all of our members who have helped by bringing refreshments to our meetings. All of the goodies have been greatly appreciated.

ATTENTION ALL MEMBERS!! WIN A FREE 2-YEAR MEMBERSHIP!! Our membership drive begins June 1-ends August 31. The member who gets the most new CCNGS members during that time WINS a FREE 2-YEAR MEMBERSHIP! So, GET BUSY--Bring in your neighbors' cousins, the teacher's visiting brother and his family, uncle Mel from Waikiki, and you might try grabbing a few old ladies from their slot machines at one of the casinos.

THE PROJECT OF THE YEAR!!! We are in the process of setting a schedule to catalog/extract information from the wills which are filed with Clark County. These records begin about 1909. We will need the help of ALL of our members on this project. There will be a sign-up sheet circulated soon. PLEASE SIGN UP TO HELP. When the project is finished, we intend to publish the information, and it will be free and available for use by our members.



IMMIGRATION PASSENGER LISTS FOR THE PORT OF GALVESTON



Records of the arrival of passengers at American ports held by the National Archives are a rich source of information, particularly for those immigrant ancestors who arrived in this country after 1893.

Immigration Passenger Lists

The National Archives has had available for some time microfilmed immigration passenger lists for Key West, FL; Savannah, GA; New Orleans; Portland, ME; Baltimore; Boston and New Bedford, MA; New York; Philadelphia; and Providence, RI.

This article will describe the newly available immigration passenger lists for the port Galveston, TX, as an example of the value of these records to genealogical research.

The Galveston Lists

Passenger manifests of vessels arriving at Galveston and the suburbs of Houston, Brownsville, Port Arthur, Sabine, and Texas City, TX, cover the years 1896 to 1948. There are a few lists for 1893, but none for 1894 or 1895.

Cursory examination of lists for 1902 shows passengers who were, in large part, natives of Russia, Austria, Hungary, Moravia, Bohemia, Galicia, and Croatia, with a few from Germany, Holland, and Britain.

In addition to places in Texas, their destinations included cities in California, Utah, Kansas, Colorado, Nebraska, Arkansas, Louisiana, and Tennessee.

Information Contained in the Records

The earliest Immigration and Naturalization (INS) forms provide the following information for each passenger--in addition to the name of the master, the name of the vessel, the ports of arrival and embarkation, and the date of arrival:

Full name; age; sex; whether married or single; occupation; whether able to read and to write; nationality; city or town of last residence; final destination in the U.S.; whether having a ticket to such final destination; by whom passage was paid; whether in possession of money and, if so, whether more than \$30 or less; whether ever before in the U.S. and, if so, when and where; whether going to join a relative and, if so, that person's name, address, and relationship; whether ever in a prison or almshouse (poorhouse) or supported by charity; whether a polygamist; whether under contract to labor in the U.S.; condition of health, mental and physical; and whether deformed or crippled and, if so, the nature and cause.

Additional questions were added in later years. In 1903, the form was changed to provide information about the passenger's race, in addition to his nationality, or country of last permanent residence. In 1906, questions were added about the place of birth (country and city or town) and personal description, including height, complexion, colors of hair and eyes, and marks of identification. In 1907, the form was amended to include the name and address of the

nearest relative in the country of origin. Other questions were added through the years designed to exclude the criminal, the insane, and those holding unpopular political views.

Some of the Galveston lists are annotated to show the date of admission as a resident alien or date of naturalization. Some entries are stamped "debarred" if the alien was not allowed to enter the U.S. Some of the lists include names of U.S. citizens returning from abroad.

Microfilm Publications

The Galveston passenger lists are reproduced on National Archives microfilm publication M1359 (36 rolls). There are two microfilm indexes to the records: M1357 (3 rolls) covers the period 1886-1906, and M1358 (7 rolls) covers the period 1906-1952.

These microfilm publications are available to researchers at the National Archives in Washington, D.C., and at the Fort Worth archives branch. They may become available at other archives branches in the future. Individual microfilm rolls can be purchased from the National Archives.

As an alternative to using these microfilmed records, a search of these indexes and passenger lists can be requested by mail by using NATF Form 81, Order for Copies of Ship Passenger Arrival Records. To order a search by mail you must provide the full name of the passenger, the port of entry, and an approximate date of arrival.

If your European ancestor immigrated at the turn of the century and settled in Texas, one of the neighboring states, or the West, look for them in the immigration passenger lists for the port of Galveston.

----- (National. Gen. Soc., Washington D.C., 1986 via GAS LITES, Fall 1986)

#

WEST COAST PASSENGER LISTS: The National Archives have no passenger lists for the West Coast ports. The San Francisco passenger lists were destroyed by fires in 1851 and 1940. The California Historical Society, 2090 Jackson St., San Francisco, CA 94101 has lists of persons who arrived in California between 1820-69, and the indexes which were from newspaper and other sources. (The Rogue Digger, RVGS, via GAS LITES, Vol 10 #3)

LOST PASSENGER LISTS FOUND: Lost lists of San Francisco and other Western seaboard ports have been found according to Cynthia Fox, Judicial, Fiscal & Social Branch of GSA. The records were located at the Washington National Records Center in Suitland, MD. These lists include arrivals at Honolulu, Portland, San Diego, San Francisco, San Pedro, and Seattle. Also included are some arrivals to El Pase, Galveston, Miami, Newport News, Port Huron, and Oswego. The National Archives informs us that 470 reels of San Francisco lists and 36 reels of Galveston lists have been microfilmed. These are available at the National Archives in Washington, D.C. Check your local National Archives Branch to see if these have been added to their holdings. (GAS LITES, Fall 1986)

Some helpful terms taken from the Maryland - Delaware Genealogist.

'Immigrated' means the individual furnished his own transportation.

'Transported' means that someone other than the individual paid for his passage.

'Servant' means the individual contracted to repay his transportation costs by acting as a servant for a specified number of years.

'Service' means the individual had completed his period of servitude satisfactorily.

(Desert Diggings, Victorville, CA 12/85)

IRISH IMMIGRANTS: For Irish Ancestry, from the years 1831-1916 the Irish Immigrants, or family for the mother country, placed ads in the Boston Pilot. This was the largest Irish-American newspaper in this country at that time. These ads were placed to find lost or separated friends and family members. They can include information about the family, occupations, the home parish and the emigration. There were 40,000 such ads, and they are now being studied by two Northeastern University professors. Volume I of their study will be published soon by the New England Historic Genealogical Society and Northeastern's Irish Studies program.

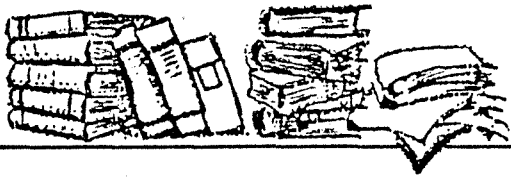
(Saginaw Gen. Soc., Saginaw, MI, via SLVGS, 2/87)

NORWEGIAN IMMIGRANTS: St. Olaf College, Northfield, MN 55057, has the Rowberg file. This is a collection of obituaries clipped from Norwegian newspapers from 1914-1960+. These are U.S. newspapers written in the Norwegian language. Obituaries are for persons of Norwegian births throughout the U.S.
(YLGSN, 1/87)

#

COME TO THE SILENT AUCTION TO BE HELD AT THE AUGUST 11 MEETING OF THE CLARK COUNTY NEVADA GENEALOGICAL SOCIETY. BE AT THE JUNE 9 AND/OR JULY 14 MEETINGS FOR MORE DETAILS!!!





Library News

Ship Passenger Lists Publications, Resources.

EDITOR'S NOTE: THE FOLLOWING ARE NOT BEING ENDORSED. THEY ARE ONLY BEING SUPPLIED AS SOURCES FOR POSSIBLE HELP IN YOUR RESEARCH.

1. Passenger and Immigration Lists Index, compiled by P. William Philby (Gale Research Co., Detroit, MI).
2. Ellis Island: Gateway to America, [\$1]
3. Free Catalog - lists genealogy books, periodicals, maps and computer programs designed to help people trace their family's history.
4. The Famine Immigrants: Lists of Irish Immigrants Arriving at the Port of New York, 1846-1851.
Volume I: January 1846-June 1847
Volume II: July 1847-June 1848
Volume III: July 1848-March 1849
5. Passenger Arrivals at the Port of Baltimore, 1820-1834, from Customs Passenger Lists
6. PASSENGERS TO AMERICA. A Consolidation of Ship Passenger Lists
7. Ireland and Irish Emigration to the New World from 1815 to the Famine

Item 1. Check availability at local libraries, book stores.

Items 2 & 3. Available from ANCESTRY INC., P.O. BOX 476, SALT LAKE CITY, UT 84110. (Womens Day Magazine, 11/86)

Items 4, 5, 6, & 7. Information/available from Car-Del Publications, Box 73, Ludlow, MA 01056. (Car-Del Scribe, 1/85)

#

CCNGS has received notification of the publication of the Chew Family Newsletter covering all branches of the CHEW surname and allied lineages. It is published quarterly at a cost of \$15 per year. Contact: Frances Breagle, 6619 Pheasant Rd., Baltimore, MD 21220

Notification was also received of the publication of a family newsletter, Robinson/Robertson etc of Virginia. Cost is \$10 yearly. Contact: R. D. Bradshaw, Publisher, Genealogical and Historical News, Cumberland Gap, TN 37724-0700.

New Publication: Nevada Tombstone Record Book - A Historical Review of Nevada Towns. Available thru: Nevada Families, Historical Research Reference Project, 1916 Maryland Parkway, Las Vegas, NV 89104-3106.

I CAN'T FIND THEM IN THE CENSUS - BUT I KNOW THEY WERE THERE!

Every genealogist in the world has had this problem crop up at one point or another. This article is being written in the hopes that you can learn some additional ways of finding your ancestors in the census records - even though you couldn't find them the first time around.

The most obvious step to take if you can't find your family in an index to a particular census is, of course, to go through the census itself, name by name by name. Indexes are made by human beings, and are apt to skip over names, misread them, or put in the name twice! If you do have an index, and can't find your ancestor, it also helps to read the introduction to make sure that your ancestor would have been indexed in the first place.

A prime example is the 1880 Soundex, which many people assume includes all families. However, the 1880 Soundex includes ONLY those families which had a child aged 10 or younger.

Another way to combat the problem is to 'play around' with the supposed surname. We have all heard that surnames can be spelled in different ways, but it is often hard to think of different ways to spell the surname you are interested in. If you can't think of alternate spellings, ask other genealogical friends, or your neighbors. Ask them to spell the name you are interested in - and you'll be surprised at the range of answers you will get.

If the surname you are researching starts with a vowel, that gives you another possible 'door'. If, for instance, the name you are working on is Owens, take the last letter (or clear sound) of the Christian name, and 'tack it on' the front of Owens. Thus, if your ancestor's name was Richard Owens, look under Dowens and other spelling variations. John Owens could have been misunderstood as John Nowens.

Conversely, the surname of Owens could have ended up as Wens - and the 'O' might have migrated to the end of the Christian name, or gotten lost altogether.

There are, of course, many letters which got 'switched' somewhere between the census taker and the family. The 'S' and 'Z' are examples, as are 'P' and 'B', 'V' and 'W', 'C' and 'K', or 'C' and 'S'. If you just listen to a name, you can come up with all kinds of switches that might have been used.

If you are actually looking at the census records, and can't find your people, begin to play around, visually, with the capital letters, especially if the census taker liked to use initials rather than full names. The 'W' and the 'H' often look very much alike, as do the 'L' and 'S'. If you are having difficulty reading something, look up and down at other names to see if you can match the letter you are trying to figure out. The 'I' and 'J' are occasionally impossible to tell apart, by the way, because some census takers did not bring the 'J' down below the line; thus these two capital letters would end up exactly alike. Also, watch out for the similarity between the 'F' and 'T'.

If you think you have found the family you are looking for, but your particular ancestor isn't listed with the family, make sure that your ancestor wasn't listed under their middle name. If a boy was named Frank Thomas Johnson, he could have appeared on the census as Frank Johnson, as Frank T. Johnson, as Thomas Johnson, or as Thomas Frank Johnson.

This particular problem points up the absolute necessity of always writing down the full name of each of your ancestors; for all you know, the names could have gotten switched around, either by accident, or by design.

For that matter, a last name can get indexed as the first name, and vice versa. So you should check under the first name in an index if you can't find the person you are after. And if that doesn't work, break down the surname you are working on into syllables and try that way, especially if you are looking for a long surname - maybe the census taker didn't hear part of the name - or maybe the family 'swallowed' it!

Any way you look at it, there are all kinds of tricks you can use to find that ancestor who was 'temporarily misplaced.' Good Luck!!

(From The Ohio Genealogical Society Newsletter, Jan. 1983,
via Desert Diggings, Dec. 1986)

#

The National Archives has announced that individuals can participate in the Microfilm Rental Program. This program, which is now operating, allows any individual to rent National Archives microfilm. These are the only available microfilm rolls copied directly from the original silver masters maintained by the Archives.

In addition, the program introduces new lower rental fees both for direct participants and for those who order through such institutions as libraries or genealogical societies. These new rates, the lowest available, are \$3 per roll for orders of 4 rolls; \$2.50 per roll when 5-9 rolls are ordered; and \$2 per roll for orders of 10 or more rolls. In addition, the \$3 postage and handling fee is waived for orders of 4 or more rolls.

"We're delighted that the Microfilm Rental Program is now able to offer this high-quality microfilm, not only through libraries, but also directly to individuals," said a spokesperson for the National Archives.

"That way, more researchers can enjoy the benefits of access to this valuable resource. The new program will expand the customer base for the rental program, increase public awareness of it, and continue to build on our reputation for quality customer service."

The new direct-order program does not replace the present rental service which operates through local libraries. Novice genealogists who prefer to have experienced ordering assistance can still order microfilm through participating libraries. Experienced genealogists, however, can take advantage of the efficiency of the direct order program.

Interested individuals can request a copy of the Microfilm Rental Program brochure by writing to: National Archives Microfilm Rental Program, Post Office Box 2940, Hyattsville, MD, 20784.

NAMES AND NICKNAMES

The following is courtesy of Alaenton Quarterly, Anniston, AL.

Something that often throws beginning researchers off the track (and occasionally experienced ones) is the use of nicknames instead of proper names in records. In case you're not familiar with the nicknames that usually serve for the following names, we hope this will be of some benefit.

Máry = Maria, Marie, Mimi, Molly, Polly, Mamie

Matilda = Tilly, Tilda, Mattie

Francis = Franky (used as both female and male name. Usually spelled with an "i" for both).

Eleanor = Ellen, Ellie, Elena, Elnora, Nora, Helen, Nell

Elizabeth = Betty, Betsy, Beth, Bess, Britta, Elsbeth, Eliza, Liz, Lizzie, Lilibet

Sarah = Sally, Sallie, Sadie

Alice = Elsie, Else, Elise, Alce, Alicia, Allie

Almira = Mira, Mirey, Alma

Eunice = Nicy, Neesa

Jemima (Gemima) = Mimi, Mims, Jemma

Abigail = Abby, Gale, Gail

Jane = Janet, Janice, Jan, Jency, Jenny, Genetta

Nancy = Ann, Annie, Anna, Nan, Nannie, Hannah

Rebecca = Becky, Reba

Emily = Emma, Emaline

Wilhelmina = Minnie, Wilma, Minna, Willie

Margaret = Maggie, Margo, Meg, Peg, Peggy, Retta

Cecilia = Sheila, Selah, Celia

Patricia = Pat, Patty, Patsy, Trish, Trisha

Jenifer = Jean, Jenny, & others similar to Jane

Caroline = Carrie, Lina

Eugenia = Gene, Jean, Genia

Magdalene = Maggie, Lena

Dorothy = Dot, Dottie, Doris

Katharine/Catharine = Kate, Katy, Katie, Kitty, Kathy, Katrina, Rena, Kit

Virginia = Vergie, Gina, Jenny

NAMES AND NICKNAMES - Continued

Remember that some names can be either male or female.
to show which it is, use (f) or (m) in front of the name on your
records, such as --

(m) Francis M. Watson

(f) Francis M. Anderson

Now for the menfolks . . .

William = Will, Willy, Bill, Billy, Ole, Wollie, Wilhelm

Frederick = Fred, Friedreich, Rick, Ricky, Eric

Richard = Rich, Richy, Dick, Dirk, Ricardo

Elisa = Eli, Lish, El

Jehiel - Hile

John - Jack, Hans, Hance, Johan, Johannes, Jacques, Jan

Matthew = Matt, Mathias, Thiess

Nicholas = Nick, Claus, Claes

Lawrence = Larry, Larans, Lars, Laurie, Lassey

Nathaniel - Nathan, Nat, Nate

Elijah = Lige, Eli

Patrick = Pat, Rick, Patty

James = Jim, Jimmy, Jamie

Robert = Rob, Robbie, Bob, Bert

Albert = Al, Bert, Bertie

Alonzo = Al, Lon, Lonnie

Alfred = Al, Fred, Freddy

Walter = Wally

Christopher = Chris, Kit

Henry = Harry, Hank, Henny

Augustus = Gus, Augy, Gustus

Andrew = Andy, Drew

Jonathan = Jon, John, Nathan

* * * * *

NAMES AND NICKNAMES - Continued

ABBREVIATIONS OF FIRST NAMES

Jas. = James }
Jos. = Joseph } ---These frequently look alike, so read
carefully

Andw. = Andrew

Benj. or Benjⁿ = Benjamin

Chas. or Chars. = Charles

Xr., Xopher., Xofer. = Christopher

Danl. = Daniel }
Davd. = David } ---These are look-alikes when spelled out

G^o or Geo. = George

Bilbt. = Gilbert

Jno. = John

Jon., Johathn., Jonⁿ. = Jonathan

Nathⁿ. = Nathan

Nath^l., Nathan^l = Nathaniel

Robt. = Robert

Sam^l. = Samuel

Thos. = Thomas

Willm., Wm. = William

-----NAMES AND NICKNAMES--Courtesy of Desert Diggings, 3/87

#

#

#



DON'T MISS THE SUMMER POTLUCK DINNER "OUT OF DOORS"!!!!!!

JUNE 19 AT THE HOME OF EDIE KRAEMER

4221 FLAME CIRCLE

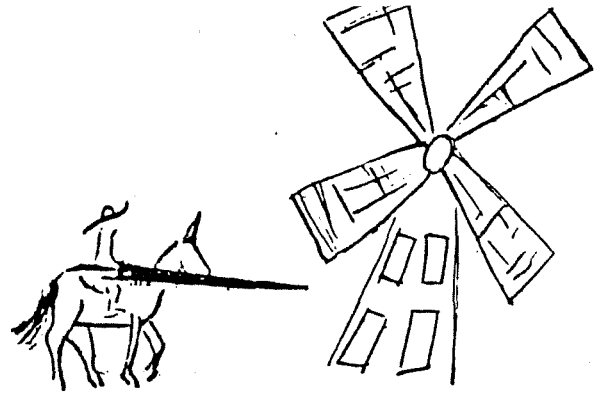
LAS VEGAS, NV 89108

Phone 647-5745 for details

Queries

BONHAM / BRYANT / MORTON / SHAW

Was SARAH BONHAM (b. 10 Dec 1653, Plymouth, MA - m. before 1676 - d. 10 Jan 1742, Plympton, MA; d/o GEORGE BONHAM and SARAH MORTON) the wife of JOHN BRYANT (b. 7 apr 1650, Plymouth, MA - d. 29 Mar 1736, Plympton, MA; s/o STEPHEN BRYANT and ABAGAIL SHAW)???



***Carl Jarnberg, 3111 S. Valley View, #A206, Las Vegas, NV 89102

JOHNSON / MATTOX / PORTER

Who are the parents of ELLA MAY JOHNSON (b. 6 May 1855-57, Erie, PA - m. JOSEPH JELLINECK ca. 1874/75 - had 5 sons [1 in IA, 4 in MN] - d. 4 Jan 1943, Los Angeles, CA)???. Mother may be ADELIA MATTOX and father may be either a JOHNSON or a PORTER???

***Carl Jarnberg, 3111 S. Valley View, #A206, Las Vegas, NV 89102

KNAPP / McCALL / SAUNDERS

Seeking info on parents of and description of NANCY THERSA SAUNDERS (b. ca. 1839-42, Manlius or Demyter, NY) She married HENRY RENIER HALL in NY - moved to Pierce Co., WI. 2nd marriage to WILLIAM KNAPP in WI. Parents may be GEORGE SAUNDERS and NANCY McCALL, both of NY.

***Carl Jarnberg, 3111 S. Valley View, #A206, Las Vegas, NV 89102

BOYER-RAPP-GORRELL

Need info on Benjamin BOYER, m. Rachael RAPP 14 Apr, 1831, East Vincent Reformed Church, Chester Co., PA. He was s/o Samuel BOYER of Schuykill township, she was d/o Barnet RAPP, same twnshp. Their son William Jasper BOYER moved to Cecil County, MD in 1860, age 20. Entered Civil War 1862, m. Margaret ORLEANS GORRELL, 12 Sep 1865 in North East, MD. Will exchange any info.

***Edith J. Kraemer, 4221 Flame Cir., Las Vegas, NV 89108 (ph. 702-647-5745)

JOHNSON-TRAVILLA-PENNOCK

Need info on Nathan JOHNSON of Londongrove, Chester Co., PA. (SADLER) m. Mary TRAVILLA, d/o William TRAVILLA and Susan PENNOCK, same location. Need p/o Nathan JOHNSON, m., b., & d. dates on all parties. Will exchange any info.

***Edith J. Kraemer, 4221 Flame Cir., Las Vegas, NV 89108 (ph. 702-647-5745)

JOHNSON-HOOPES

Need info on Jacob HOOPES and Rebecca ? p/o Sarah HOOPES (b. 28 Feb 1823 - d. 29 Jan 1886, m. Benjamin Franklin JOHNSON 10 Oct 1839, Chester Co., PA). Will exchange any info.

***Edith J. Kraemer, 4221 Flame Cir., Las Vegas, NV 89108 (ph. 702-647-5745)

HARLOW / BORDERS

Would like any information on the ancestors of Harvey HARLOW (b. 1 Jul 1825, IN - d. 15 Sep 1882, Sullivan Co., IN). Married? ELIZABETH BORDERS. Ch: Thomas L., John W., David H., Cynthia Harriet, Robert, George, Van, James.

***Linda McEwen, 1112 Nassau Dr., Las Vegas, NV 89108

BUSH / GILLEY / SPENCER

Would like any info on 'Doc' GILLEY & Martha SPENCER who are supposed to be p/o Joseph C. GILLEY (b. 20 Nov 1857, KY - m. ca. 1880 to Susan Catharine BUSH - d. 20 Feb 1929, Langlade Co., WI). Have quite a bit of BUSH info to share.

***Linda McEwen, 1112 Nassau Dr., Las Vegas, NV 89108

BENNETT / DECKARD

Would like to find b. & d. dates of John Selvey BENNETT, s/o Mansfield BENNETT & Elizabeth JAMES. John m. 27 Jan 1845 (license date) in Monroe Co., IN to Malinda DECKARD. Their ch: Jacob M., James A., Sarah E., William, Martha M., Emily Catharine, Louisa A., & John W.

***Linda McEwen, 1112 Nassau Dr., Las Vegas, NV 89108

GERBER / MOSER / FALB

Wish to exchange info with anyone researching these names in Wayne Co., OH, in the 1800s.

***Joyce Kelley Morris, 6439 Pine St., Las Vegas, NV 89120

KELLEY / WINBURN

Seeking info on JAMES MONROE KELLEY (b. 1855, NC). Married MARY ELIZABETH WINBURN (b. 1865, AR - d. 1917).

***Joyce Kelley Morris, 6439 Pine St., Las Vegas, NV 89120

MORRIS / SMITH / WHITE

Wish to exchange info with anyone researching these names in Pottawatomie Co., OK, any date.

***Joyce Kelley Morris, 6439 Pine St., Las Vegas, NV 89120

HARRELD / DOBBINS

Would like any info on Anderson F. HARRELD (b. 1824-25, TN - d. 1903, KS) & first wife Sarah Ann ____?____ (b. 1823, OH - d. 1857, IA). Known ch: Alice Samantha (b. 1847, IA - m. George W. DOBBINS, 1872, IA - d. 1885, KS), Mary Agnes (b. 1857, IA - m. Joe RIDGE - d. 1926, KS), and William.

***Boots K. Parker, 6328 Pedro Pl., Las Vegas, NV 89108 (ph. 702-645-5312)

MILLER / NOLAND / NORGAARD / PACKARD

Would like any info on Jacob MILLER (b. ca. 1833-37, Switzerland)
& Cynthia Ann NOLAND (b. 1841, IL - d. 1909, CO). They m. 23 Feb, 1865, IL).
Ch: Cora (m. O.D. PACKARD), Rose (m. Hjalmer W. NORGAARD).

***Boots K. Parker, 6328 Pedro Pl., Las Vegas, NV 89108 (ph. 702-645-5312)

NOLAND / FLUTY

Would like any info on Abraham NOLAND (b. 1821, KY - d. 1900, KS)
& Elizabeth FLUTY (b. 1820, KY - d. 1911, IL). They m. 1839, KY. Ch: Cynthia,
Nancy, Elizabeth, John, Thomas, Mary/Ada, Martha, Robert, William, David,
Nellie/Ellie, George.

***Boots K. Parker, 6328 Pedro Pl., Las Vegas, NV 89108 (ph. 702-645-5312)

HOW TO LOCATE THE RECORDS OF CLOSED OR DEFUNCT CHURCHES

Look at the following locations for help in finding church records of your ancestors:

CONGREGATIONAL:

Lancaster Seminary, 555 W. James St., Lancaster, PA 17603 - records of German Reformed Churches.

Elon College, Box 2192, Elon College, NC 27244 - southern Congregationalists.

Congregational Library and Historical Society, 14 Beacon St., Boston, MA 02108.

Genealogical queries may also be forwarded to the New England Historical Genealogical Society, 101 Newbury St., Boston, MA 02116.

UNITED PRESBYTERIAN CHURCHES:

Presbyterian Historical Society, 425 Lombard St., Philadelphia, PA 19147.

AMERICAN LUTHERAN CHURCH:

American Lutheran Church, Office of General Secretary - Archives, 333 Wartburg Place, Dubuque, IA 52001.

Records Manager, Lutheran Church of America, 231 Madison Ave., New York, NY 10016.

Lutheran School of Theology, 1100 E. 55th St., Chicago, IL 60615-5199.

UNITED METHODIST CHURCH:

United Methodist Church, P. O. Box 127, Madison, NJ 07940.

CHRISTIAN CHURCH:

The Disciples of Christ Historical Society, 1101 Nineteenth Ave. South, Nashville, TN 38212.

CLOSED CHURCHES:

Mennonite Church, 528 E. Madison St., Lombard, IL 60148.

Society of Friends, Friends United Meeting, 101 Quaker Hill Drive, Richmond, IN 47374.

CATHOLIC CHURCH:

Newberry Library in Chicago has acquired the microfilm of the Parish Records for all the Catholic Churches within the Chicago Diocese (444 parishes - including Cook and Lake Counties). Those from 1910 to present are "restricted."

NOTE: The best place to start is a church in the area where your relative lived. Remember, often local church records were donated to the local library or historical society.

(Ancestry, V IV #3, 1986; Rock Co., WI Gen Soc Newsletter, Jan 1985.)

Information Obtainable from Gravestones

For accurate analysis of gravestone inscriptions, the date when the stone was placed on the grave is very important. Usually, one placed a few days after the funeral is more reliable than one placed several years later. Stones, like cars, have distinctive styles and materials, depending upon the year they were made. Today, granite or marble markers are widely used while in the 1800s sandstone or slate was the most common stone. Tall, elaborate stones were more popular 75 years ago, while flat or slightly raised markers are used today.

By carefully studying the 'vintage' of the stone, the researcher can more accurately determine the validity of its inscription. Modern stones with ancient dates indicate replacement of an earlier stone, or considerable time lapse between death and grave marker.

Before 1800:	Slender, square sandstone or slate slabs with or without elaborate carvings.
1830-1860:	Moderate sculptured stones of white marble, subject to lichen and moss.
1860-1880:	Square, towering marble stones, often elaborately shaped, or with ornate sculpture.
1880-1910:	Soft, gray granite stone, subject to weathering.
1880-present:	Polished granite or marble, often lying flat on the ground.

American Gravestone Motifs

Here are a few of the many motifs seen on early American stones, with some of the commonly held interpretations of their symbolic significance.

--CAUTION-- Many of these are disputed.

ANGEL, FLYING: Rebirth; Trumpeting; Call to The Resurrection; Weeping; Grief.

ARCH: Victory of life; or victory in death.

ARROW: Mortality.

BIRD: Eternal life. Birds in flight: Flight of the soul.

BREASTS (also gourds, pomegranates): The church, the ministry; the nourishment of the soul.

CANDLE FLAME: Life.

COLUMNS, DOORS: Heavenly entrance.

CROWN: Glory of life after death.

DOVE: Purity, devotion.

FIGS, PINEAPPLES, OTHER FRUITS: Prosperity, eternal life.

FLOWER: Frailty of life. Severed blossom: Mortality.

GARLAND: Victory.

HAND POINTING: Heavenly reward.

HEART: Love, mortality, love of God, abode of the soul.

HOURGLASS: Time's inevitable passing.

LAMB: Innocence.
 PALL (cloth covering coffin), PICK, SPADE: Mortality.
 ROOSTER: Awakening, The Resurrection.
 SCYTHE: Death, the divine harvest.
 SHELL: The Resurrection and life everlasting. Life's pilgrimage.
 SKULL, CROSSBONES, SKELETON: Mortality.
 SUN SETTING: Death. Sun shining and sun rising: renewed life.
 THISTLE: Of Scottish descent.
 TREE: Life. Severed branch: Mortality. Tree sprouting: Life everlasting.
 VINE: The sacraments.
 WEEPING WILLOW TREE: Nature's lament.
 WINGED FACE: Effigy of the soul of the deceased; the soul in flight.
 WINGED SKULL: Flight of the soul from mortal man.
 WREATH: Victory. Wreath worn by skull: Victory of death over life.
 WHEAT SHEAVES: The divine harvest.

The following may assist you in reading old stones inscribed in other languages.

ENGLISH	GERMAN	CZECH	NORWEGIAN
January	Januar	Leden	Januar
February	Februar	Unor	Februar
March	Marz	Mars	Mars
April	April	Duben	April
May	Mai	Kveten	Mai
June	Juni	Cerven	Juni
July	Juli	Cervenec	Juli
August	August	Serpen	August
September	September	Zari	September
October	Oktober	Rijen	Oktober
November	November	Listopod	November
December	Dezember	Prosinec	Desember
Sunday	Sonntag	Nedele	Sondag
Monday	Montag	Pondeli	Mandag
Tuesday	Dienstag	Utery	Tirsdag
Wednesday	Mittwoch	Streda	Onsdag
Thursday	Donnerstag	Stvertek	Torsdag
Friday	Freitag	Patak	Fredag
Saturday	Samstag	Sobota	Lordag

- Bibliography --
- How to Search a Cemetary; The Genealogical Institute, Salt Lake City, UT; 1974
 - American Gravestone Motifs; The Association for Gravestone Studies.
 - Yorba Linda Genealogical Society Newsletter; Jan. 1987

August 1987

Sun	Mon	Tue	Wed	Thu	Fri	Sat
						1
2	3	4	5	6	7	8
9	10	11 General Meeting Silent Auction Round Table 7 pm	12	13	14	15
16	17	18	19	20	21	22 Library Day 1 pm
23	24	25 Board Meeting	26	27	28	29
30	31					

September 1987

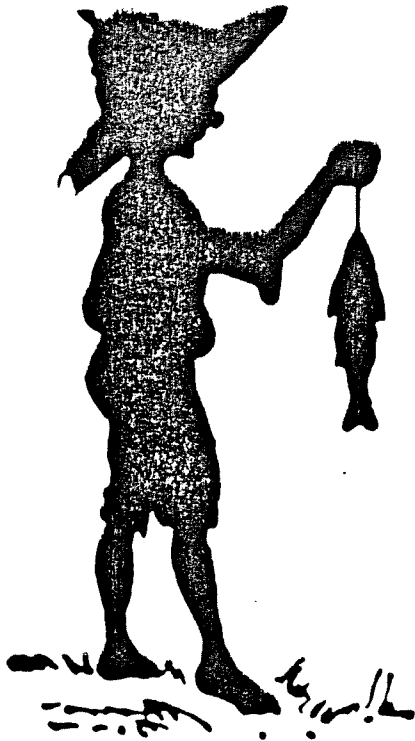
Sun	Mon	Tue	Wed	Thu	Fri	Sat
		1	2	3	4	5
6	7	8 General Meeting 7 pm	9	10	11	12
13	14	15	16	17	18	19
20	21	22 Board Meeting	23	24	25	26
27	28	29	30			

June 1987

Sun	Mon	Tue	Wed	Thu	Fri	Sat
	1	2	3	4	5	6
7	8	9 General Meeting Bob LaPointe 7 pm	10	11	12	13
14	15	16 Board Meeting	17	18	19 Ft Luck Dinner 6 pm	20 Garage Sale
21	22	23	24	25	26	27 Library Day 1pm.
28	29	30				

July 1987

Sun	Mon	Tue	Wed	Thu	Fri	Sat
			1	2	3	4
5	6	7	8	9	10	11
12	13	14 General Meeting Pauline Fautz 7 pm	15	16	17	18
19	20	21	22	23	24	25 Library Day 1pm.
26	27	28 Board Meeting	29	30	31	



DON'T MISS THE SUMMER POT-
LUCK DINNER "OUT OF DOORS"
WITH C.C.N.G.S. TO BE HELD
JUNE 19th AT THE HOME OF
EDIE KRAEMER !!

Time: 6:00 p.m.

Place: 4221 Flame Circle

More details at monthly
meetings !

MAKE SURE YOU BRING YOUR DONATED ITEMS FOR THE GARAGE
SALE TO BE HELD SATURDAY, JUNE 20, 1937 AT EDIE KRAEMER'S
HOME, 4221 FLAME CIRCLE.



COME TO THE SILENT AUCTION TO BE HELD AT THE AUGUST 11th MEETING OF THE
CLARK COUNTY NEVADA GENEALOGICAL SOCIETY. BE AT THE MAY 12th MEETING