

LINCOLN WHITE PINE CLARK LYON

ORMSBY

PERSHING

LANDER

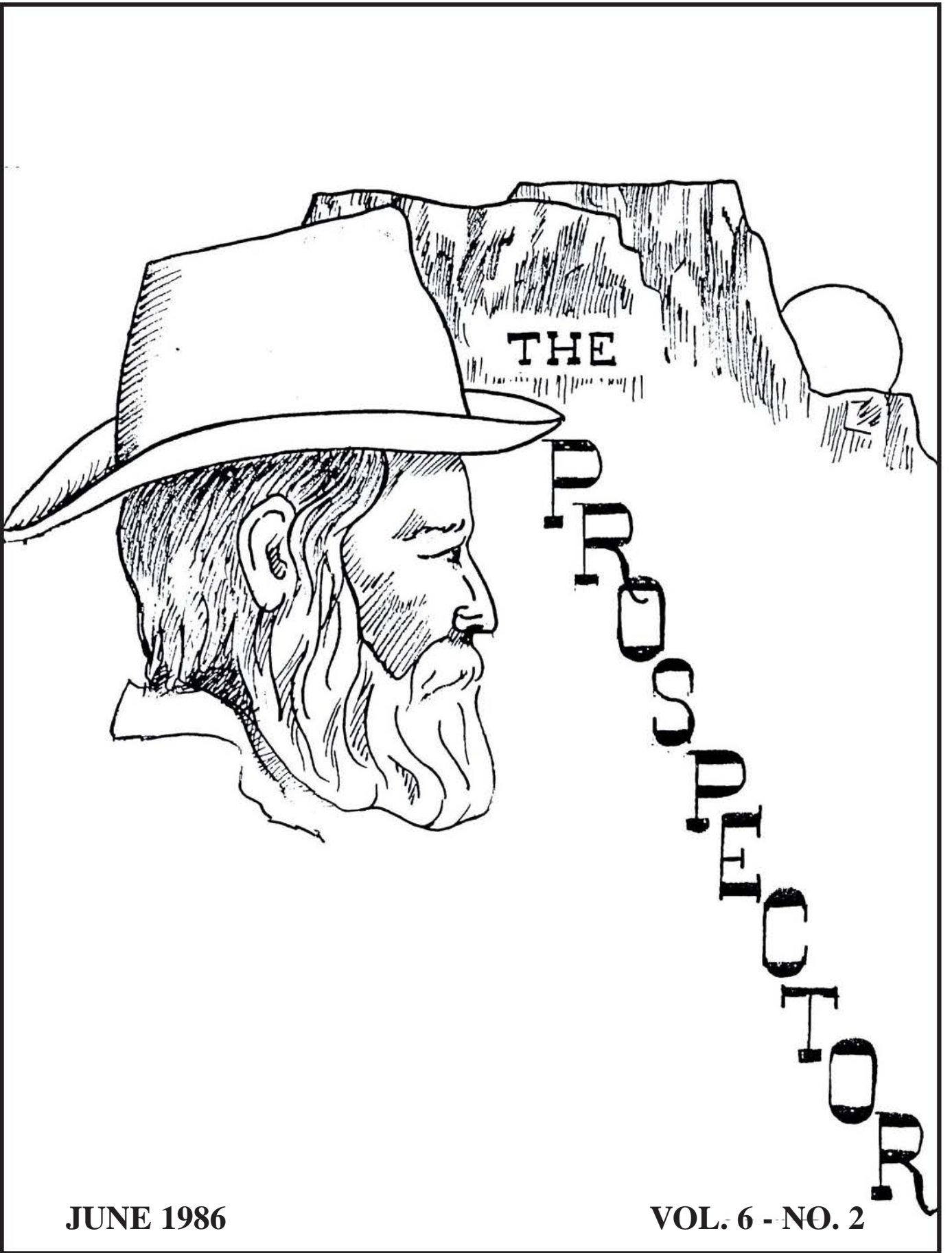
CHURCHILL

HUMBOLDT

EUREKA

ESMERALDA

MINERAL



JUNE 1986

VOL. 6 - NO. 2

DOUGLAS WASHOE NYE ELKO STOREY

The CLARK COUNTY NEVADA GENEALOGICAL SOCIETY (CCNGS) is a non-profit organization under Sec. 501 (c) (3) of the Internal Revenue Code. The Society meets regularly the second Tuesday of each month in the Drawbridge Room of Commercial Center, 900 E. Karen, Suite A-210 at 7:00 p.m. with a business meeting, guest speaker, and refreshments. The purpose of these meetings is for instruction on how to collect, preserve, and publish genealogical, biographical, historical, and geographical materials. All correspondence with the Society should be addressed to the Clark County Nevada Genealogical Society, P.O. Box 1929, Las Vegas, Nevada 89125.

The membership year runs from September 1 through August 31. Membership dues - per year - are as follows:

Single Membership . . . . .	\$ 10.00
Life Membership . . . . .	\$120.00
Family Membership . . . . .	\$ 12.00
(Husband and wife)	
Subscriber Membership . . . . .	\$ 7.00
(Quarterly is mailed)	

THE PROSPECTOR, the quarterly publication of the CCNGS, is published each March, June, September, and December. Deadlines for submitting material for publication are:

- 15 February for the March issue
- 15 May for the June issue
- 15 August for the September issue
- 15 November for the December issue

This quarterly is free with membership; for non-members it is available for \$1.50 per copy.

The quarterly is published for genealogists and persons interested in family and historical research, and for the purpose of receiving and collecting historical and genealogical records. The Society accepts no responsibility for errors in data received and published.

It is the desire of the Society to compile for printing in this quarterly original material when possible, supplementing this with other records--published or unpublished--of interest to the readers, to include brief family genealogies, Bible records, book reviews, ancestor charts, queries, old letters, vital statistics, census records, county records, cemetery records, and articles on local history and genealogy. It is also intended that the quarterly be balanced with articles reflecting Western, Nevada, and Clark County content, and with articles connected with, or of particular interest to the members. Objections to, or support of, this policy may be made to the Editor or other officers. Material of this nature is continually being solicited from members and non-members.

CLARK COUNTY NEVADA  
GENEALOGICAL SOCIETY

Founded and Chartered 1976

THE PROSPECTOR

Volume 6 - No. 2

June 1986

---

Table of Contents .....	i
Society Officers .....	ii
Membership Notes, Birthdays .....	ii
From the President's Pen .....	1
Editor's Notes .....	2
From the Past .....	3
To the Present .....	4
Recent Activities .....	4
Trip to Salt Lake City .....	5
To the Future .....	6
Upcoming Events .....	6
Search and Research--Helps and Hints .....	7
In Search Of .....	7
Careful Searching .....	8
Can Cemeteries Really Help? .....	9
Pictures From the Past .....	13
The Lighter Side of Genealogy .....	14
Ancestor Charts .....	15
Surname List (addition) .....	18
Membership Application .....	
Membership List (5/30/86) .....	



CLARK COUNTY NEVADA GENEALOGICAL SOCIETY

P.O. BOX 1929
LAS VEGAS, NEVADA 89125

"PRESERVING FOR POSTERITY"

Society Officers and Committees

- PRESIDENT ..... Patricia SAYE ZUBIA
VICE-PRESIDENT ..... Linda ROBINSON MCEWEN
SECRETARY-CORRESPONDING ..... Barbara PROSCH CULLINGS
SECRETARY-RECORDING ..... Donna GILL HARVEY
TREASURER ..... Madonna DOSS MCCARTHY
PROGRAM DIRECTOR ..... Naydean THOMPSON UPDIKE
EDITOR ..... Boots NORGAARD PARKER
HISTORIAN ..... Keotah SOLLARS FANNIN
MEMBERSHIP ..... Edith JOHNSON KRAEMER
HOSPITALITY ..... Treva GARREN ROPER
REFRESHMENTS ..... Joyce KELLEY MORRIS
PUBLICITY DIRECTOR ..... Joyce KELLEY MORRIS

OUR MEMBERS

Our CONGS Historian, Keotah "Kay" Fannin, has been very ill and unable to attend any of our meetings for sometime. Please give her a call at 732-0636 to say hello and help cheer her up - let her know how much we all miss her.

I would like to say thank you to the people who participated in our montnly meetings by bringing refreshments. Each and everything we all do to participate benefits our Society.

-Joyce Morris, Refreshments Chairperson

Birthdays

June

- 16 - Joan Clarke
25 - Ken Goodman

July

- 12 - Naydean Updike
30 - Patricia Saye Zubia

August

- 3 - Laura Folk
18 - Joyce Morris
20 - Rex Frazier

September

- 2 - Dick Edmondson
17 - Nancy Frazier
29 - Bud Dimon

Note: If your birthday falls witain this time span and it isn't noted here, we apologise. At present we do not have information on all of our members.



CLARK COUNTY NEVADA GENEALOGICAL SOCIETY  
P.O. BOX 1929  
LAS VEGAS, NEVADA 89125

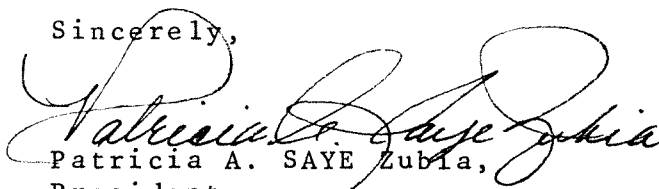
From the President's Pen.....

This will be the last time you will hear from me before you elect your new 1986 - 87 President. Therefore, I would like to tell each of you it has been a privilege and an honor for me to serve as your President for the Society this past year.

Since October 1985, there has been a great many advances made for the C.C.N.G.S. This is due to the excellent performance of your Executive Board of Directors which have served the Society for the 1985 - 86 year. To name a few of the advances, we have increased our Membership from approximately 25 to over 75 members which we owe our thanks to our Membership Director, Edie Kraemer; We have had bigger & better programs, and an excellent sales table has been provided by our hard working Program Director, Naydean Updike; Thanks to our newly appointed Publicity Director, Joyce Morris, our community is rapidly knowing that we exist, and the many more persons which have contributed in their own way to help the Society, which have aided us to advance. Not one of these advances could have taken place without the hard & dedicated efforts of your Executive Board. It has been a pleasure to work with each of them, and I take my hat off to them.

I have sincerely enjoyed this past year, having the opportunity to meet the many new members and continuing the friendship of the past members. I suppose I am like any President when I say that I would like the chance to stay your President for another term. So, should the Nominating Committee decide to add my name to the Slate of Officers for the up coming elections, and should you the member decide to vote for me at our elections in August & September, I would be delighted to serve the membership for another term.

Sincerely,

  
Patricia A. SAYE Zulia,  
President

FROM YOUR EDITOR . . . . .

I am just beginning this job as your Editor, so please, have patience.

It will take all of us to publish THE PROSPECTOR - especially our membership at large. Without your contributions, we will have no quarterly. Some contributions will be published immediately, some may have to wait until the next issue. I will try to use all of the information submitted. Deadlines for submitting information are listed on the inside front cover. Also, we need feedback from our members. What do you like or dislike about THE PROSPECTOR? If you have ideas, let us know.

In this edition, I hope to let you see a little of our past, our present, and our future. 1986 is the 10th Anniversary for the CCNGS. Because of this, I have copied the cover of our first issue (December 1976), changing only the dates and publication information. We are having our anniversary celebration at our September meeting, and I hope to see many of our members and former members at that celebration.

I would like to thank the people who have helped me with this edition, especially: Joyce Morris, Naydean Updike, and Pat Zubia. I also want to thank Dayla Fillmore, Ginny Mangus, and Elizabeth Parker, members of Cadette Girl Scout Troop 361 who are working on our quarterly as a service project.

*Boots Parker*

FROM THE PAST . . . . .

10 Years Ago . . . April, 1976. The first meeting of the Clark County Nevada Genealogical Society was held; nine persons attended.

9 Years Ago . . . March, 1977. Membership of CCNGS was up to 30 persons.

9 Years Ago . . . June, 1977. Genealogy buffs are out en masse in the summer. Vacations are often planned to include one or more "Information Stops". If you have any hints on how to gain more for summer genealogy seekers, please speak up. For example, if you know such and such an outfit closes for vacation at a specific time, or has shortened summer hours (or longer!) you may save someone a needless trip.

-Reprinted from The Prospector, 6/77.

8 Years Ago . . . March, 1978. Two new members have joined our ranks. A mother/daughter team, Mrs. Ora Palmer Ryan (mother) and Mrs. Rosetta Phelps Turner (daughter). We are happy to have you both.

-Reprinted from the Prospector, 3/78.

The following item was the opening page of The Prospector, December 1977 -- the VERY FIRST PUBLICATION of CCNGS!

**A HEARTY WELCOME TO YOU FROM THE CLARK COUNTY NEVADA GENEALOGICAL SOCIETY. THIS IS THE FIRST ISSUE OF OUR NEW GROUP'S PUBLICATION. IT WILL EXHIBIT SOME LEARNING AND GROWING PAINS, AND WE ASK YOU TO BE SUPPORTIVE OF OUR EFFORT. THE PROSPECTOR WILL BE HAPPY TO HEAR FROM ANY OF YOU WHO WISH TO SUBMIT CONSTRUCTIVE CRITICISM.**

**THE CLARK COUNTY NEVADA GENEALOGICAL SOCIETY HAS BEEN CHARTERED ONLY SINCE SEPTEMBER, 1976. OUR PURPOSE FOR ORGANIZING IS TO BRING TOGETHER THOSE PERSONS INTERESTED IN GENEALOGICAL RESEARCH; TO FURTHER THE PRESERVATION AND ENLARGEMENT OF GENEALOGICAL HISTORY THROUGH INSTRUCTION, WORKSHOPS, AND THIS PUBLICATION. . . .**

**IT IS OUR INTENTION TO PUBLISH ACCURATE GENEALOGICAL MATERIAL. HOWEVER, WE ASSUME NO RESPONSIBILITY FOR THE ACCURACY OF FACT NOR FOR THE INTERPRETATION OF MATERIAL SUBMITTED BY OUR CONTRIBUTORS.**

**NEVADA, OUR STATE, HAS SOME CHARACTERISTICS WHICH WE PLAN TO SHARE WITH YOU. WE WILL MENTION NEVADA CEMETERIES AND TELL YOU IF, WHEN, AND HOW MUCH OF EACH ONE HAS HAD GENEALOGICAL WORK PERFORMED, AND PLANS IN PROGRESS CONCERNING FUTURE WORK.**

**ONE OF THE MAJOR OBJECTIVES OF THIS PUBLICATION IS TO BRING FORTH FROM PRIVATE 'HIDEY-HOLES' INFORMATION FOUND ONLY AT ONE SOURCE, I.E., TRANSCRIPTS OF FAMILY BIBLES, CHURCH RECORDS WHICH HAVE FOUND THEIR WAY INTO PLACES MAKING THEM INACCESSIBLE AS PUBLIC INFORMATION, COPIES OF CORRESPONDENCE OF GENEALOGICAL VALUE, ETC. TO THIS END, WE REQUEST YOU TO ASSESS YOUR OWN COLLECTION OF DOCUMENTS AS POSSIBLE CANDIDATES FOR OUR PAPER.**

TO THE PRESENT . . . . .

10th Anniversary / Birthday Preparations

September 1986 will be the 10th Anniversary of the CCNGS. We would like to invite all past members to attend this celebration and to bring a friend to our 'birthday party'. Come join us--see how we've grown!

# # #

The CCNGS Monthly Workshops which were held at Naydaen Updike's home on the last Saturday of each month have been cancelled due to lack of participation. Look for the announcement in the September issue of THE PROSPECTOR regarding the 1986-87 CCNGS schedule of genealogy classes/workshops beginning in October. Some of the topics which will be covered this next year will include: Where to write for birth, death, and marriage records, Using local libraries for research, Using courthouse records, Using census records, Various genealogical charts and forms and how to use them.

CCNGS 'library holdings' which were previously stored and used at Naydaen Updike's house are now being held at Edie Kraemer's house, 4221 Flame Circle (close to the Las Vegas Golf Course). If you would like to look through these periodicals, newsletters, books, etc., please call Edie to make arrangements. Her phone number is 647-5745.

# # #

Recent Activities

April 25 through May 2 were the dates we had a display set up at the Clark County Library on Flamingo Road to inform the public of our group. Included in the display were a Family Bible belonging to Barbara Cullings, a Civil War diary furnished by Donna Harvey, and pictures, marriage certificates, and old letters of Joyce Morris' family. We hope everyone had a chance to see the display. We may have a chance to set up another display in September to go with our 10th anniversary, so think about what you may like to place in the display and contact Joyce Morris.

Have you visited our Sales Table at any of the past several meetings? There are lots of 'goodies', so check it out!



## TRIP TO SALT LAKE CITY

Our first annual Salt Lake research trip was a great success, and plans will be made soon for the next trip. Those going from our group were; Joyce Marshall, Madonna McCarthy, Evelyn Rich, Carol Miller, Nellie McGregor, Dick and Katy Edmonson, and Ramona Duff. Since we were such a small group, we joined up with "Root Cellar, Sacramento Genealogy Society" who had 45 members headed by Peggy Bass. We did this in order to take advantage of guest speakers, special classes at the library, special rates for rooms, and a banquet our last night in town. These things are not available to smaller groups.

We met at the Amtrack Station on the night of April 12th for the overnight train ride, putting us into Salt Lake City at 6:30 on Sunday morning. Sunday was spent going to hear the Morman Tabernacle Choir, brunch at Marriotts, a walking tour of all the Morman places of interest and then dinner at the Spaghetti Factory at Trolley Square.

We were all up early on Monday morning to be at the library when it opened at 7:30. The library had scheduled an orientation for us, as well as 2 other classes during the day. One was "Finding Family Histories" by Lynne Jorgensen, and the other "Doing Illinois Research" by Jay Roberts. Since Monday is a short day at the library, we had a quest speaker, Arlene Eakle, who spoke to us in the evening at Howard Johnsons. She was able to answer lots of questions that arose from our first day of research in the new library.

Everyone in our group had lots of success and found lots of ancestors. We got together for several meals during the week to compare our progress. Professional genealogist, William Arbuckle helped our group quite a lot and even tho the library was crowded, we had a great time. We enjoyed many more special classes that gave us a lot of insight into our problems.

On Saturday evening we had our big banquet at Howard Johnsons (where we stayed) and our guest speaker was Jimmy Parker who is the head librarian at Salt Lake City. He told us about the future expansion plans of the library and how they will be getting more and more into computers.

We caught the 11:10 train home that night for another overnight ride home. Everyone was talking about next April's trip, and really looking forward to it.



Standing: Nellie McGregor, Joyce Marshall, Ramona Duff, (hostess) Peggy Bass  
Carol Miller, and Dick Edmonson  
Seated: Madonna McCarthy, Evelyn Rich, and Katy Edmonson

On Monday, May 5, a mini-seminar featuring Mrs. Arlene Eakle was held at our regular meeting place. An 'Early Bird Session', entitled "Tracing a Pedigree Across Western New York", was held between 5:00 and 6:00 p.m. The subjects covered in the sessions from 7:00 to 10:00 p.m. were "Arm Chair Genealogical Research" and "How to Find Birth, Marriage, and Death Dates Prior to 1900." Mrs. Eakle was an excellent speaker. She communicated well with the audience and everyone came-away with many new ideas and information. We wish to thank her and hope she might return sometime in the future.

At the June 10 meeting we are having a speaker from Los Angeles. She is Ms. Nancy Bier and will be speaking on English research.

### TO THE FUTURE . . . . .

#### Dates to Remember - Upcoming Events

Be sure to visit the CCNGS Sales Table at each of our regular monthly meetings. Look for our new item, the 'Personal History Form', for only \$1 each!

Pool-side Pot Luck Dinner -- Friday, June 20, 1986 at 6:00 p.m. at Edie Kraemer's house, 4221 Flame Circle. The Society will furnish the hamburgers, hot dogs, coffee, and ice tea. A list of food to bring will be passed-around at the June 10 meeting, so sign-up for your choice. Please--no alcoholic beverages. Bring your swimming suit and enjoy the evening.

July 8 -- Regular monthly meeting. The program is entitled "You, Me, and Genealogy: A Round Table Discussion."

August 12 -- Regular monthly meeting. First presentation of Slate of Officers for the 1986-87 year by the Nominating Committee.

September 9 -- CCNGS 10th Anniversary Party and regular monthly meeting. Election of Officers for the 1986-87 year and their initiation.

In the September issue of THE PROSPECTOR, watch for the schedule of genealogy classes which will be held each month during the 1986-87 year.

Beginning in October, 1986, on the 2nd Tuesday of each month (regular meeting night), we will have the following schedule:

7:00 - 7:30 --- Classes/Workshops  
7:30 - 8:00 --- CCNGS Business Meeting  
8:00 - 9:00 --- CCNGS Monthly Program

The following article is from the LDS Family Journal, March 21, 1986 issue. Pauline C. Foutz, a former CCNGS member, is the author of the regular column in the paper. The LDS Family Journal is available in most local grocery stores.

In Search of ....

by Pauleen C. Foutz

The Immigrant Genealogical Society was founded in North Hollywood, California in 1982 to promote an interest in an interest in German genealogy for all German speaking people wherever located in the world. Because there has been a need for people to learn about their roots in Europe, the Society has expanded its interests to all European and foreign genealogy. Membership in the Society entitles the member to a subscription to their Newsletter, unlimited use to their library in North Hollywood and subscription to their new periodical "German American Genealogy." This new periodical will contain queries, manuscripts, transcribed ship lists, etc. Inexpensive ways to research German records is an objective and a special committee is in charge of promoting this.

For more information write: The Immigrant Genealogical Society, 5043 Lankershim Blvd., North Hollywood, Ca. 91601.

\*\*\*\*\*

GERMAN RESEARCH -

The German National Tourist Office (GNTO) publishes the fact sheet, "Ancestral Search in Germany," with the names and addresses of organizations engaged in German family research, organizations involved researching pedigrees of noble families and those who can assist with research on German immigrants to the U.S. For a copy, write or call the GNTO, 747 Third Ave., New York, NY 10017, (212) 308-3300.

Americans whose ancestors came from Hamburg and the surrounding area or who immigrated from Hamburg (1850 - 1914) are especially fortunate. The city operates the Historic Emigration Office in the Museum of Hamburg History. The cost is \$30.00 if the exact emigration year is known, For every additional year research, and additional \$10.00 is charged. Contact the Historic Emigration Office, Museum for Hamburgische Geschichte, Holstenwall 24, 2000 Hamburg, West German.

Hamburg and Lufthansa, have joined to offer "Come Trace Your Roots in Hamburg" tours. For information call the Hamburg Press Service 26, Broadway, Suite 911, New York, NY 10004, (212) 514-8220, Lufthansa or a travel agent. The press service can also send information on vacationing in Hamburg.

\*\*\*\*\*

## CAREFUL SEARCHING - THERE IS NO SUBSTITUTE

In my years of consultation and genealogical research I have had some experience in this matter of searching records with care, with a foreknowledge of what you expect to find. I call it objective searching.

What you want to know will determine where you look--with care.

At one time I was a librarian in a genealogical library. I provided a service of genealogical consultations. One person insisted that his ancestor had to be in an 1840 census of the United States. She had searched the county census several times and the ancestor was not there. I asked her to get the census again, look at every line and determine if each name, was or was not, her ancestor. You can imagine her glee when she returned to say that the ancestor had been found.

Just this last week a person stated that there was no need to search the soundex to the 1880 census because, "I have searched through them many times and the family can't be found."

Disregarding his advice and with some care and deliberation, the family was found. Soundex coding systems are not easily searched successfully and careful attention to coding is essential as well as careful searching of the names in a variety of different presentations. It all comes down to the fact that HOW to search records is more important than WHERE records are found. Many sources and persons can assist you in making records available but care in searching has no substitute.

Careful searching requires concentration, an intentional commitment to find what you expect to find in the record. If it is a census record or the manuscript of an original record of some kind, study the handwriting, anticipate what you expect to find. Intense concentration in almost anyone does not stay for long periods of time. Take breaks from careful searching and the results will be rewarding.

Try to do just one thing in record searching and do it well with forethought of what you expect to find, and you too will find that "missing" ancestor.

E. Kay Kirkham

-----Reprinted from THE GENEALOGICAL HELPER, May-June, 1985.

# # #

The Clark County Library on Flamingo Road now has a Genealogy Section. It is located upstairs, in the northwest corner. Be sure to "check it out"!

The Source, co-authored by Arlene Eakle, is currently available at that same Branch Library, in the Reference Section. Since that copy cannot be checked-out, a second copy is being obtained and may be placed in the Genealogy Section, where it may be borrowed.

The following item is reprinted from the Hi-Desert Genealogical Society's publication, December 1985 issue. Carolyn Clark is the Editor of that publication.

### CAN CEMETERIES REALLY HELP?

Carolyn Clark

For many of us who are doing genealogical research, it is often the woman in the lineage who is the hardest to identify. She may be listed in pre-1850 census returns as only a "female of a certain age". In land records, she may be listed only as "wife" or not even listed at all. In church records, maybe only by first initial along with her husband (Ex. J. Smith and M.) when children's births are recorded. So, where possibly, do we find the early female ancestor listed by her full name for the first time in her life? Perhaps, on the tombstone! Therefore, the old cemetery becomes a very important source of information especially for the females.

Others that we may find in the cemetery and not on census or other records are children born to the family who die at an early age. Also, the tombstone often solves the mysteries of who were wife number one and wife number two, etc. especially in an instance where both wives were named Mary, for instance. Also, immigrant ancestors may be found identified by the original European name, whereas later generations of the family may be listed by the Americanized version. So, do spend the time and effort to search the old cemeteries when you get the opportunity. You will usually be richly rewarded.

Of course, there are disappointments to be found in cemeteries as in all other types of research; especially when the stones are gone or have faded or been broken beyond recognition. Old stones tend to topple over and become covered with leaves and grass, sometimes as deep as ten or twelve inches. Many times the older stones are just tossed to one side against a fence or wall to get them out of the way; while if on a hill they may have washed or slipped down to the foot of the hill or into an adjoining gully. So surrounding areas should always be checked for abandoned stones. Some even turn up in neighboring yards as did our George Wells tombstone which was being used as a door prop. Vandalism, severe weather and progress do their share to destroy these valuable records in stone.

Relocation of old cemeteries can often present a problem, too. As farm land becomes urbanized and filled with houses, the family cemetery plots give way to other uses of the land and are often just dozed over. However, in the case of dams, military establishments, and freeway construction, the graves are often charted carefully and placed in a new location. The records can then be located through the group responsible for the move. TVA, NASA, BLM, etc. may house these removal records; and some especially if a military cemetery, have placed copies with the National Archives. Older residents or historical societies can usually help with information about the relocated cemetery.

When searching the cemetery, be sure to make note of all indirect data as well as the more obvious birth and death dates, birth places, etc. Many clues such as epitaphs, church affiliation, occupations, cause of death, military service, physical description,

citizenship and survivors can lead you to yet other places to research. A plat of the cemetery showing family burial sites may help, or even a sketch showing size and location of stones in family groups.

Consider such things as size, location, and condition of cemetery to help determine the economic status and lifestyle of the people. Statues, artwork, and separate sections may indicate ethnic burials as Orientals, Indians, and some religious sects may have special sections for specific kinds of burials. Masonic burials were usually done in crypts. Historical events may be indicated by graves of prominent or important people. Many stones with death dates of the same time period may indicate an epidemic or tragedy. Nationality of immigrants can sometimes be determined by the type of cemetery they created. For instance, Polish graves would likely have stones of red or black with exact dates; while Swedish immigrants might have used warm, soft colors like gray and pink with very little data for their stones. So make sure you look around the cemetery for these and other clues while you are there.

In the event that the marker inscriptions have weathered beyond reading, there are some accepted methods of making the surface legible; but never, never use a stiff brush or abrasive to clean the stone since this will cause further damage. A vinegar solution applied with a soft sponge will do well for removing moss and discoloration with very little rubbing if you plan to take photos. Artists chalk may be applied to lettering to make it stand out for a photo but then must be removed with a three parts water and one part vinegar solution when you have finished. Tombstone rubbings can be done safely with a sheet of light paper and crayons.

Most rural families during the 19th Century had a family burial plot on the homestead of the first generation to settle an area. Health codes and regulations governing hazards were unknown. A few of these plots still exist, but with the use of licensed morticians, burial permits, and government regulations, the family plot is seldom used. Since these cemeteries have been left unattended as family members moved on, they are difficult to find and many have been destroyed. If you are fortunate enough to locate one, however, it will prove to be most valuable genealogically.

In the cities, most churches had burial grounds. As cities grew and the suburb became the place to live, many of the old church cemeteries were covered over. Most burial sites today are maintained by either the county, city, or the state. The commercially owned memorial park is the latest type burial ground.

All municipal and commercially operated cemeteries and many church cemeteries have a registry of burials called a sexton's book which is kept by the office or caretaker. This book is a good record of cemetery deeds and plats. A copy of cemetery deeds is kept by the sexton and all sales or transactions regarding the plat are recorded. At the time this system began, many cemeteries attempted to record earlier burials and add this to the plat record as well, but many are incomplete.

CAN CEMETARIES REALLY HELP? - (Conclusion)

Burial permit records began about 1920 and are a good source of information, too. These are obtained from the city or county by the mortician. Grave opening orders maintained by the Sexton will give name, dates, size of grave, location, death certificate number, and person ordering the opening.

Many transcribed records exist of old cemeteries throughout the country, most having been recorded by historical or genealogical societies. And these are very valuable records, but most lack the details and indirect evidence that can be obtained from art work, statues, etc. So, do plan to visit any old cemetery you can locate in and around your ancestor's home. Most will prove to be excellent sources of both direct and indirect information and will certainly be worth your time and effort to visit.

BIBLIOGRAPHY: The Source, ed. by Arlene Eakle and Johni Cerny  
Guide to Genealogical Research, National Archives

# # #

The Clark County Library on Flamingo Road has an excellent book by P. William Filby entitled American and British Genealogy and Heraldry. It is a selected list of books to provide help to researchers in tracing family origins. This is a reference manual to help researchers find books that are available for genealogists. Lib. # Z5311 .F55 1975 CS47

At the Jimmy Walker seminar (January), he spoke of finding ancestors on a list for passengers arriving in New York harbor in the New York Times Newspaper. The Clark County Library, Flamingo Road Branch, has microfilm for the New York Times dating back to 1852.

Mr. Walker also suggested that we all become aware of what is in the National Archives and the area branches. The book, Guide to Genealogical Research in the National Archives, is available at the Flamingo Branch of the Clark County Library. It is published by National Archives Trust Fund Board, Washington, D.C. Lib. # Z5313 .U5 U54 1982

# # #

Did you know??? If you are searching for information in Nevada, Ormsby County no longer exists. Ormsby County and Carson City (yes, Carson City) were consolidated into an independant area, named Carson City, by the Nevada State Legislature in 1969.

From the Arkansas Genealogical Society --- They tell us there is a new county association --- Ashley County Genealogical Society. They plan to publish a quarterly and you may write them at P.O. Drawer R, Crossett, Ark. 71635

Looking in Ohio for a Land Patent: Write to the Auditor of the State of Ohio, P.O. Box 1140, Columbus, OH 43216, requesting a search of the index. Send SASE please. Then, if your ancestral home is found on the index, send all of the information you receive to the U.S. Department of the Interior, Bureau of Land Management, Eastern States Office, 350 S. Pickett St., Alexandria, VA 22304 with \$4.25. REMEMBER, this is a 2-step process and MUST be done in order.

-Reprinted from the Western Trail Gen. Soc., 12/85

ORPHANS. . . The Grundy County Jewitt-Norris Library has an index file of known passengers who came to Missouri from New York City on the Orphan Trains. Contact Mrs. Evelyn Sheets, Chairman, Senior Citizens Historical Data Bank, 511 E. 9th Street, Trenton, MO 64683.

-From Diablo Descendants Newsletter, via Desert Diggings Newsletter, 12/85

Free genealogy section. Queries are limited to 35 words plus sender's name and address. Syracuse Herald American/Post Standard (newspaper), Clinton Square, P.O. Box 4915, Syracuse, NY 13201.

-Information via Member Barbara Cullings

Ancestors from Rome, NY? Very reasonable charge to check old newspapers/phone books for vital statistics. Send information to Marilla Grimes, 416 E. Bloomfield St., Apt. 1, Rome, NY 13440.

-Information via Member Barbara Cullings

# # #

Heritage, Inc. is a group of adults who are interested in adoption, (all phases) and the plight of adult triad members; adoptive parent(s), adoptee(s), and birthparent(s); seeking their heritage, which because of sealed records, triad members are inaccessible in many states and sometimes life threatening.

Several members of Heritage, Inc. have been members of the Clark County Nevada Genealogical Society. We have found an undeniable relationship exists between the two distinct fields; genealogy and adoption; seeking the truths of our heritage.

...Triadoption Library, 7571 Westminster Avenue, Westminster, CA 92683, will send your society a current listing of search and support groups throughout the world for a self-addressed, stamped envelope.

-Reprinted from THE PROSPECTOR, Vol. 3, No. 3, 1983

Searching in Texas? The staff of the Texas State Library will do mail searches of indexed material. Minimum order is \$1.00. Send your ancestors information to: Genealogy Section, Texas State Library, Box 12927, Capitol Station, TX 42348.

-Reprinted from the San Luis Valley Gen. Soc.



Pictures from the past .....

The photo at the top right is that of Michael Ulrich Gerber, Great-great grandfather to our fellow member Joyce Kelley Morris.

Michael was born 7 July 1832 in Sonnenberg, Ohio. He married Catherine Moser 30 November 1855, Wells Co., Indiana. She was born 18 June 1855, Berne, Switzerland.

Michael was the second child of Ulrich and Barbara (Falb) Gerber.

Ulrich came to America in 1822 to the area of Sonnenberg, Ohio. Now called Kidron, Ohio. Leaving home on 22 April 1822 he sailed from La Havre, France, on 31 May 1822. He arrived in New York 65 days later, on 4 August 1822. After a week in New York he set out for Ohio taking the route that previous Mennonite families had taken

Michael died 8 March 1895 in Kansas and Catherine died 10 March 1877.

\*\*\*\*

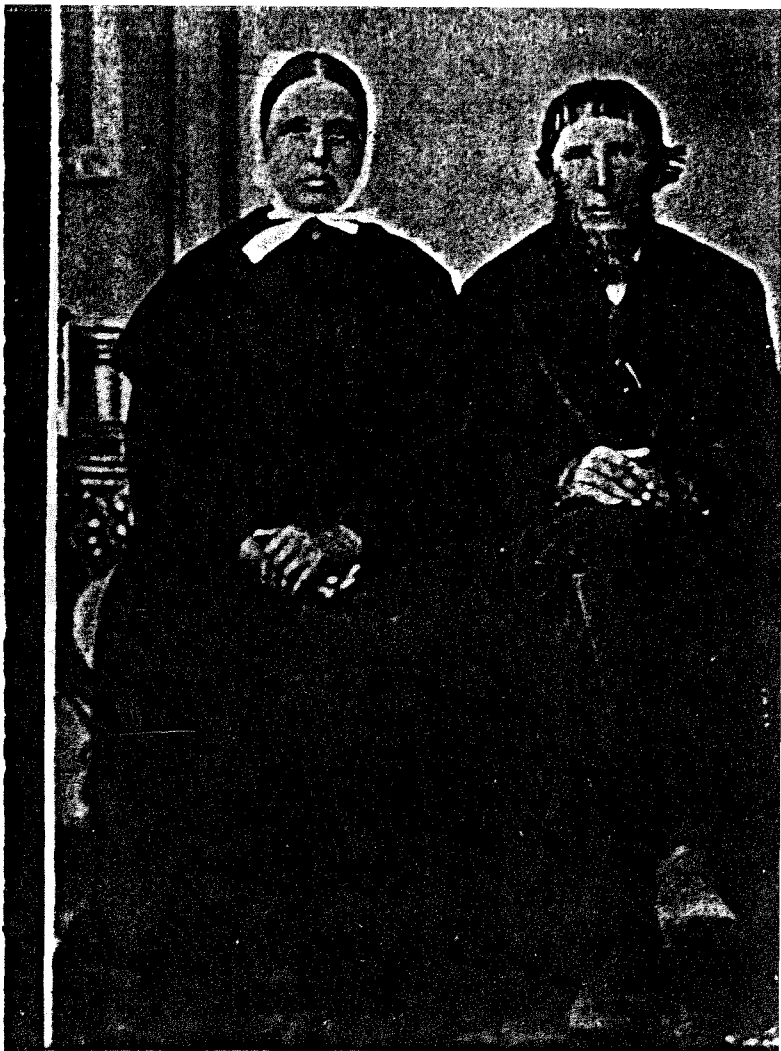
The photo at the bottom right is that of the Thomas Gerber family.

Thomas was the first child of Michael and Catherine (Moser) Gerber. He was born 3 December 1856 in Bluffton, Wells Co., Indiana. He married Carolina Frey 4 July 1885 in Little River, Kansas. She was born 24 November in Des Moines, Iowa and was daughter of Martin and Barbara (Neuenswander) Frey.

Thomas died 7 January 1923 in Garden City, Missouri, Carolina died 10 September 1898 in Fortuna, Missouri.

The child standing to the back of the picture is the grandmother of Joyce Kelley Morris, Gertrude Grace Gerber at age 10.

This picture was taken February 1896 when Thomas was 39 and Carolina was 29.

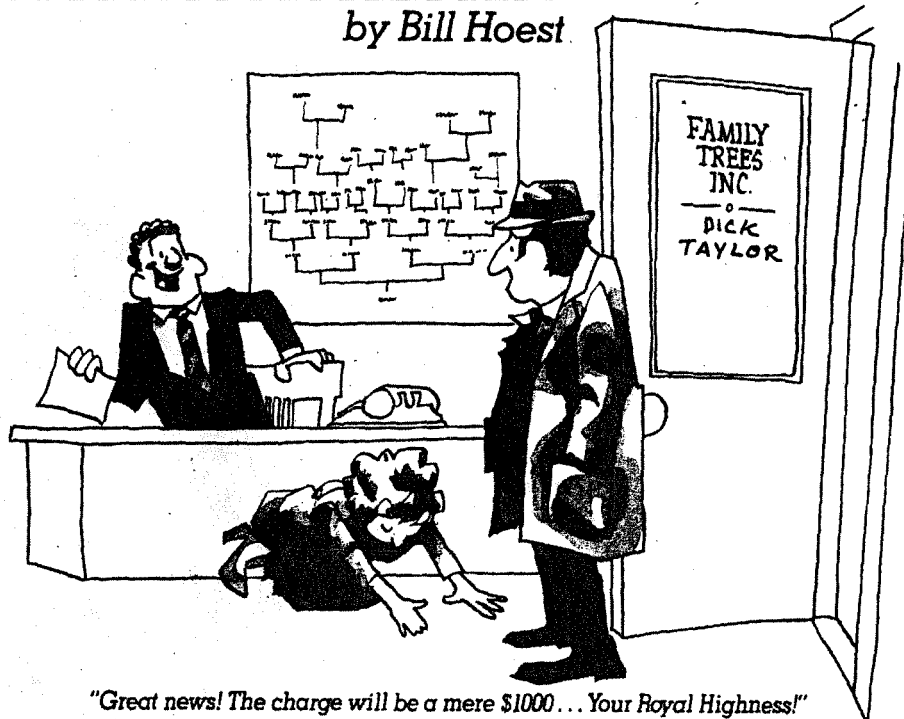


The Lighter Side of Genealogy



"I understand he can trace 'em back further than anybody."

by Bill Hoest



"Great news! The charge will be a mere \$1000... Your Royal Highness!"

# Ancestor Chart

Name of Compiler Sara Mauck Ghizzoni Person No. 1 on this chart is the same  
 Address 4622 S. GARITA ST. person as No. \_\_\_\_\_ on chart No. \_\_\_\_\_  
 City, State LAS VEGAS, NV  
 Date October 11, 1984

Chart No. 1

b. Date of Birth  
 p.b. Place of Birth  
 m. Date of Marriage  
 d. Date of Death  
 p.d. Place of Death

4 ADOLPH GHIZZONI

(Father of No. 2)  
 b. 7 NOV 1900  
 p.b. ITALY  
 m. 22 JUNE 1942  
 d. 30 JULY 1952  
 p.d. SHARON, MERCER CO, PA

2 ALAN ADOLPH GHIZZONI

(Father of No. 1)  
 b. 28 MAR 1943  
 p.b. SHARON, MERCER, PA  
 m. 19 FEB 1966, HUBBARD, OH  
 d.  
 p.d.

5 THERESA BENI

(Mother of No. 2)  
 b. 16 NOV 1913  
 p.b. MASURY, TRUMBULL, OH  
 d.  
 p.d.

1 SHARI THERESA GHIZZONI

b. 5 DEC 1971  
 p.b. SAN BONO, SAN BERNARDINO CO, CA  
 m.  
 d.  
 p.d.

8 John Leroy MAUCK

(Father of No. 3)  
 b. 2 APR 1903  
 p.b. CAMPBELL, ALLEGHENY CO, PA  
 m. 21 APR 1929  
 d.  
 p.d.

3 SARALEE MAUCK

(Mother of No. 1)  
 b. 9 NOV 1945  
 p.b. HUBBARD, TRUMBULL CO, OH  
 d.  
 p.d.

7 ELIZABETH SARA WEBER

(Mother of No. 3)  
 b. 15 APR 1907  
 p.b. CHARLEROI, ALLEGHENY CO, PA  
 d.  
 p.d.

(Spouse of No. 1)

b. d.  
 p.b. p.d.

8 JOSEPH GHIZZONI

(Father of No. 4)  
 b. 1859  
 p.b.  
 m.  
 d. 1940  
 p.d. MASURY, TRUMBULL, OH

9 MARIA PICCIANTINI

(Mother of No. 4)  
 b. 1861  
 p.b.  
 d. 1940  
 p.d. MASURY, TRUMBULL, PA

10 MICHAEL BENI

(Father of No. 5)  
 b. 1879  
 p.b. AUSTRIA - HUNGARY  
 m.  
 d. 1916  
 p.d. MASURY, TRUMBULL, OH

11 EVA RUPPNER

(Mother of No. 5)  
 b. 26 MAR 1883  
 p.b. AUSTRIA - HUNGARY  
 d. 26 NOV 1967  
 p.d. SHARON, MERCER, PA

12 JOHN W.N. MAUCK

(Father of No. 6)  
 b. 17 APR 1878  
 p.b. LUKHY, HAGE CO, VA  
 m. 24 APR 1900 BRADDOCK, PA  
 d. 10 SEPT 1960  
 p.d. YOUNGSTOWN, MAHONING, OH

13 MYRILE VIOLETTA MYERS

(Mother of No. 6)  
 b. 13 MAY 1881  
 p.b. EVERSON, FAYETTE CO, PA  
 d. 2 DEC 1962  
 p.d. HOWLAND, TRUMBULL, OH

14 WILLIAM WEBER

(Father of No. 7)  
 b.  
 p.b. GERMANY  
 m.  
 d.  
 p.d. YOUNGSTOWN, MAHONING, OH

15 SARA TEGUE

(Mother of No. 7)  
 b.  
 p.b. FORD CITY, ARMSTRONG, PA  
 d.  
 p.d. YOUNGSTOWN, MAHONING, OH

16	b.	(Father of No. 8, Cont. on chart No. _____)
	m.	
	d.	
17	b.	(Mother of No. 8, Cont. on chart No. _____)
	d.	
18	b.	(Father of No. 9, Cont. on chart No. _____)
	m.	
	d.	
19	b.	(Mother of No. 9, Cont. on chart No. _____)
	d.	
20	b.	(Father of No. 10, Cont. on chart No. _____)
	m.	
	d.	
21	b.	(Mother of No. 10, Cont. on chart No. _____)
	d.	
22	b.	(Father of No. 11, Cont. on chart No. _____)
	m.	
	d.	
23	b.	(Mother of No. 11, Cont. on chart No. _____)
	d.	
24	b. (VA)	1859 (Father of No. 12, Cont. on chart No. _____)
	m.	
	d.	
25	b. (VA)	1857 (Mother of No. 12, Cont. on chart No. _____)
	d.	
26	b.	JACKSON J. MYERS (Father of No. 13, Cont. on chart No. _____)
	m.	
	d.	
27	b.	SADIE SAYLOR (Mother of No. 13, Cont. on chart No. _____)
	d.	
28	b.	(Father of No. 14, Cont. on chart No. _____)
	m.	
	d.	
29	b.	(Mother of No. 14, Cont. on chart No. _____)
	d.	
30	b.	(Father of No. 15, Cont. on chart No. _____)
	m.	
	d.	
31	b.	(Mother of No. 15, Cont. on chart No. _____)
	d.	

# Ancestor Chart

Name of Compiler Kenneth Eugene Goodman Person No. 1 on this chart is the same person as No. \_\_\_\_\_ on chart No. \_\_\_\_\_  
 Address 111 Wyoming Street  
 City, State Boulder City NV 89005  
 Date 14 May 1980

Chart No. 1

b. Date of Birth  
 p.b. Place of Birth  
 m. Date of Marriage  
 d. Date of Death  
 p.d. Place of Death

4 John Zachary Goodman  
 (Father of No. 2)  
 b. 23 March 1848  
 p.b. Manheim, PA  
 m. 12 December 1882  
 d. 23 February 1929  
 p.d. Ephrata, PA

2 Howard Rhoads Goodman  
 (Father of No. 1)  
 b. 31 December 1883  
 p.b. Salunga, PA  
 m. 12 January 1916  
 d. 13 January 1955  
 p.d. Elizabeth, New Jersey

5 Elizabeth Kohr Rhoads  
 (Mother of No. 2)  
 b. 20 August 1864  
 p.b. East Lampeter Twshp PA  
 d. 30 October 1958  
 p.d. Cleona, PA

1 Kenneth Eugene Goodman  
 b. 25 June 1923  
 p.b. Cranford, New Jersey  
 m.  
 d.  
 p.d.

6 Thomas Evans  
 (Father of No. 3)  
 b. 23 September 1859  
 p.b. Havens Head, Milford Haven, Wales  
 m. 5 June 1887  
 d. 12 July 1936  
 p.d. Bayonne, New Jersey

3 Elizabeth Ann Evans  
 (Mother of No. 1)  
 b. 18 November 1891  
 p.b. Merthrytydfil, Wales  
 d.  
 p.d.

7 Mary Morgan  
 (Mother of No. 3)  
 b. 14 January 1863  
 p.b. ,wales  
 d. 1 April 1956  
 p.d. Bayonne, New Jersey

(Spouse of No. 1)

8 Jacob R Goodman  
 (Father of No. 4)  
 b. 29 April 1817  
 p.b. Conestoga Centre, PA  
 m.  
 d. 28 February 1894  
 p.d. Lancaster, PA

9 Mary Ann McQueeney  
 (Mother of No. 4)  
 b. 20 May 1820  
 p.b.  
 d. 5 Nov 1864  
 p.d.

10 Emanuel Miller Rhoads  
 (Father of No. 5)  
 b. 8 August 1830  
 p.b. Strasburg Twshp, Pa  
 m.  
 d. 25 February 1904  
 p.d. Neffsville, Pa

11 Anna K. Sneath  
 (Mother of No. 5)  
 b. 11 September 1842  
 p.b. Manor Twshp, Pa  
 d. 5 May 1916  
 p.d. Lancaster, Pa

12 James Evans  
 (Father of No. 6)  
 b.  
 p.b.  
 m.  
 d.  
 p.d.

13 Mary Davies  
 (Mother of No. 6)  
 b.  
 p.b.  
 d.  
 p.d.

14 Phillip Morgan  
 (Father of No. 7)  
 b.  
 p.b.  
 m.  
 d.  
 p.d.

15 Margaret Davies  
 (Mother of No. 7)  
 b.  
 p.b.  
 d.  
 p.d.

16	b.	(Father of No. 8, Cont. on chart No. _____)
	m.	
	d.	
17	b.	(Mother of No. 8, Cont. on chart No. _____)
	d.	
18	b.	(Father of No. 9, Cont. on chart No. _____)
	m.	
	d.	
19	b.	(Mother of No. 9, Cont. on chart No. _____)
	d.	
20	<u>HENRY RHOADS</u> (Father of No. 10, Cont. on chart No. _____)	
	m.	
	d.	
21	<u>MARY MILLER</u> (Mother of No. 10, Cont. on chart No. _____)	
	b.	
	d.	
22	b.	(Father of No. 11, Cont. on chart No. _____)
	m.	
	d.	
23	b.	(Mother of No. 11, Cont. on chart No. _____)
	d.	
24	b.	(Father of No. 12, Cont. on chart No. _____)
	m.	
	d.	
25	b.	(Mother of No. 12, Cont. on chart No. _____)
	d.	
26	b.	(Father of No. 13, Cont. on chart No. _____)
	m.	
	d.	
27	b.	(Mother of No. 13, Cont. on chart No. _____)
	d.	
28	b.	(Father of No. 14, Cont. on chart No. _____)
	m.	
	d.	
29	b.	(Mother of No. 14, Cont. on chart No. _____)
	d.	
30	<u>Dau</u> (Father of No. 15, Cont. on chart No. _____)	
	b.	
	m.	
	d.	
31	<u>Mary Rhys</u> (Mother of No. 15, Cont. on chart No. _____)	
	b.	
	d.	

Form A2, Copyright 1963 by The Everton Publishers, Inc., P.O. Box 506, Logan, Utah, publishers of THE GENEALOGICAL HELPER. Send for a free catalogue with lists and full descriptions of many genealogical aids.

Name of Compiler Joyce Kelley Morrison Person No. 1 on this chart is the same

Address 6439 Pine St. person as No. \_\_\_\_\_ on chart No. \_\_\_\_\_

City, State Las Vegas, Nevada 89120

Date April 24, 1986

CHART NO. \_\_\_\_\_

b. Date of Birth  
p.b. Place of Birth  
m. Date of Marriage  
d. Date of Death  
p.d. Place of Death

4 James Monroe Kelley  
(Father of No. 2)  
b. 22 May 1888  
p.b. New London Union Ark  
m. June 1924 Dallas Co Ark  
d. 6 Apr 1972 Ark  
p.d. Manteca SJ Co Calif

2 Harvey Columbus Kelley  
(Father of No. 1)  
b. 19 Aug 1925  
p.b. Pine Bluff Jefferson Ark  
m. 1 Dec 1945 Reno Nev.  
d.  
p.d.

5 Laura Bell Bridges  
(Mother of No. 2)  
b. 15 Feb 1910  
p.b. White Hall Jefferson Ark  
d.  
p.d.

1 Joyce Fay Kelley  
b. 18 Aug 1949  
p.b. Stockton San Joaquin Co Calif  
m. 8 Nov 1969 Reno Nev  
d.  
p.d.

6 Peter Louie Moretich  
(Father of No. 3)  
b. 15 Dec 1886  
p.b. Dubroni Austria  
m. 22 Jul 1922 Fresno Calif  
d. 8 May 1961  
p.d. Stockton SJ Co Calif

3 Grace Moretich  
(Mother of No. 1)  
b. 12 May 1927  
p.b. Modesto Stanislaus Calif  
d.  
p.d.

7 Gertrude Grace Gerber  
(Mother of No. 3)  
b. 24 Mar 1886  
p.b. Mitchell Rice Kansas  
d. 3 Feb 1963  
p.d. Stockton SJ Co Calif

William Alva Morris  
(Spouse of No. 1)  
b. 13 June 1946 d.

8 James Monroe Kelley  
(Father of No. 4)  
b. 1855  
p.b. No. Car  
m.  
d.  
p.d.

9 Mary Elizabeth Winburn  
(Mother of No. 4)  
b. 1865 Ark  
p.b.  
d. 1917  
p.d.

10 Columbus Marian Bridges  
(Father of No. 5)  
b. 3 Oct 1879  
p.b. Pine Bluff Jefferson Ark  
m. 1905 " " Ark  
d. 1 Jun 1961  
p.d. Monterey Monterey Calif

11 Dorne Mae Monk  
(Mother of No. 5)  
b. 24 May 1889  
p.b. Pine Bluff Jefferson Ark  
d. 15 Feb 1942 Ark  
p.d. Pacific Grove Monterey Calif

12 Louis Moretich  
(Father of No. 6)  
b.  
p.b.  
m.  
d.  
p.d.

13 Anna Michaels  
(Mother of No. 6)  
b.  
p.b.  
d.  
p.d.

14 Thomas Gerber  
(Father of No. 7)  
b. 3 Dec 1856  
p.b. Bluffton Wells Co Ind  
m. 4 July 1885 Little River Mo  
d. 7 Jan 1923 Kan  
p.d. Garden City Cass Mo

15 Carolina Frey  
(Mother of No. 7)  
b. 24 Nov 1866  
p.b. Des Moines Polk Iowa  
d. 10 Sep 1898

16 Jack Kelley  
b. (Father of No. 8, Cont. on chart No. \_\_\_\_\_)

17 Susanna Hughes  
(Mother of No. 8, Cont. on chart No. \_\_\_\_\_)  
d. During Civil War  
b.  
d. 1894

18 b. (Father of No. 9, Cont. on chart No. \_\_\_\_\_)  
m.  
d.

19 b. (Mother of No. 9, Cont. on chart No. \_\_\_\_\_)  
d.

20 Joseph Jobe Bridges  
(Father of No. 10, Cont. on chart No. \_\_\_\_\_)  
b. before 1910  
m. ? Anderson  
d. 1865 (Mother of No. 10, Cont. on chart No. \_\_\_\_\_)  
1939 Whitehall

21 b. 1865 (Mother of No. 10, Cont. on chart No. \_\_\_\_\_)  
d. 1939 Whitehall

22 Charles C. Monk Ark  
(Father of No. 11, Cont. on chart No. \_\_\_\_\_)  
b.  
m.  
d.

23 Lucia Jones  
(Mother of No. 11, Cont. on chart No. \_\_\_\_\_)  
b. Ukia Inc  
d.

24 b. (Father of No. 12, Cont. on chart No. \_\_\_\_\_)  
m.  
d.

25 b. (Mother of No. 12, Cont. on chart No. \_\_\_\_\_)  
d.

26 b. (Father of No. 13, Cont. on chart No. \_\_\_\_\_)  
m.  
d.

27 b. (Mother of No. 13, Cont. on chart No. \_\_\_\_\_)  
d.

28 Michael U. Gerber  
(Father of No. 14, Cont. on chart No. \_\_\_\_\_)  
b. 7 Jul 1983  
m. 30 Nov 1855 Inc  
d. 8 Mar 1895 Kan

29 Catherine Moser  
(Mother of No. 14, Cont. on chart No. \_\_\_\_\_)  
b. 18 Jun 1829  
d. 10 Mar 1877

30 Martin Frey  
(Father of No. 15, Cont. on chart No. \_\_\_\_\_)  
b. 28 Oct 1828  
m.  
d.

31 Barbara M Neuenswanc  
(Mother of No. 15, Cont. on chart No. \_\_\_\_\_)  
b. 15 Sep 1835

Form A2, Copyright 1963 by The Everton Publishers, Inc., P.O. Box 506, Logan, Utah, publishers of THE GENEOLOGICAL HIGHLIGHTER. See for a free catalogue with lists and full descriptions of many genealogical aids.



CLARK COUNTY NEVADA GENEALOGICAL SOCIETY  
 P.O. BOX 1929  
 LAS VEGAS, NEVADA 89125

SURNAME LIST

Name: Morris Joyce Fay Kelley  
           Last           First           Middle           (Maiden)

Address: 6439 Pine Street Las Vegas, Nevada 89120  
           St. or P.O. Box           City           State           Zip

Membership # 122                   Telephone #(702) 456-4497

Please list below all surnames in which you are researching and the locality in which they lived. Please print or type clearly, and return to the Editor for publication. (Please, 10 only)

SURNAME	LOCALITY
<u>Kelley</u>	<u>No. Carolina, Arkansas</u>
<u>Bridges</u>	<u>Arkansas</u>
<u>Anderson</u>	<u>Arkansas</u>
<u>Winburn</u>	<u>Arkansas</u>
<u>Moretich</u>	<u>Austria/Germany</u>
<u>Gerber</u>	<u>Switzerland, Chio, Kansas, Indiana</u>
<u>Neuenswander</u>	<u>Switzerland, Chio</u>
<u>Moser</u>	<u>Switzerland, Chio</u>
<u>Morris</u>	<u>Tennessee, Arkansas,</u>
<u>Moon</u>	<u>Texas</u>



CLARK COUNTY NEVADA GENEALOGICAL SOCIETY  
P.O. BOX 1929  
LAS VEGAS, NEVADA 89125

Membership Application

Name: \_\_\_\_\_  
Last First Middle (Maiden)

Spouse: \_\_\_\_\_  
Last First Middle (Maiden)

Address: \_\_\_\_\_

City: \_\_\_\_\_ Co.: \_\_\_\_\_ State: \_\_\_\_\_ Zip: \_\_\_\_\_

Telephone: ( ) - ( ) -  
Residence Business

Annual dues of \$ \_\_\_\_\_ entitles me to participate in the meetings, workshops, and elections for the Society.

I understand and agree that use of the materials and property of the C.C.N.G.S. for personal monetary gain is strictly prohibited and failure to comply with this principle initiates expulsion from said Society.

Attached is remittance of \$ \_\_\_\_\_ for membership for the fiscal year ending next September 30.

\_\_\_\_\_ Date Signature (maiden also if applies)

FOR OFFICIAL USE ONLY

Receipt # \_\_\_\_\_ Membership # \_\_\_\_\_

Date: \_\_\_\_\_ Cash ( ) Check ( ) Check # \_\_\_\_\_

Membership of above applicant is: Approved ( ) Declined ( )

\_\_\_\_\_ President

\_\_\_\_\_ Vice - President

\_\_\_\_\_ Date of Signature

\_\_\_\_\_ Date of Signature

CLARK COUNTY NEVADA GENEALOGICAL SOCIETY  
MEMBERSHIP LIST  
PERIOD ENDING 05-30-86

NO.	MEMBER	ADDRESS	CITY	ST	ZIP	A/C	TELEPHONE #
138	AUME, Patricia	5551 Corral Cr.	Las Vegas,	NV.	89119	702	
085	BORCHERS, Chris	P. O. Box #12575	Las Vegas,	NV.	89112	702	451 - 6661
134	BRUESCH, Esther	6484 W. Cheyenne Av.	Las Vegas,	NV.	89108	702	645 - 6615
067	BRUNNER, Earl	330 No. 9th St.	Las Vegas,	NV.	89101	702	382 - 7053
117	BUCKLEY, Mary A.	7125 Bilpar Rd.	Las Vegas,	NV.	89131	702	645 - 4443
125	CHESBRO, Rachel	7500 Monterey St.	Gilroy,	CA.	95020		
094	CLARKE, Joan C.	3710 Maverick Ln.	Las Vegas,	NV.	89108	702	645 - 7792
135	CRIPPIN, Betty J.	2593 Daytona Av.	Lake Havasu,	AZ.	86403	602	453 - 5245
071	CULLINGS, Barbara	1728 Kassabian Av.	Las Vegas,	NV.	89104	702	735 - 1688
128	CUNNINGHAM, Sharon	4221 Flame Cr.	Las Vegas,	NV.	89108	702	647 - 5745
050	DIMON, Wilbur "Bud"	2272 Cascade	Las Vegas,	NV.	89122	702	452 - 0145
051	DOUCETTE, Joseph E.	4525 E. Chicago Av.	Las Vegas,	NV.	89104	702	453 - 4393
108	DuFOISE, Novis	321 Bayview St.	San Rafael,	CA.	94901	415	456 - 5337
069	GUFF, Ramona	1017 Alan Shepherd	Las Vegas,	NV.	89128	702	363 - 0047
121	EDMONDSON, Dick & Katie	1004 Oak Tree Ln.	Las Vegas,	NV.	89108	702	647 - 5926
126	FATRBANKS, Ray & Lucille	3387 Clandara Av.	Las Vegas,	NV.	89121		
008	FANNIN, John H.	3123 Miami Rd.	So. Bend,	IN.	46614		
004	FANNIN, Keotah M.	2007 Santa Ynez Dr.	Las Vegas,	NV.	89104	702	732 - 0636
131	FINNEY, Robert	5162 Somerset Dr.	Las Vegas,	NV.	89120	702	458 - 7558
068	FOLK, Laura	6126 Castlemont Av.	Las Vegas,	NV.	89115	702	452 - 8310
142	FORDYCE, Wilma E. Wood	3220 Michael Way #3	Las Vegas,	NV.	89191	702	645 - 9226
110	FRAZER, Donald N.	210 Shadebrook Ln. E	Las Vegas,	NV.	89107	702	878 - 2472
127	FRAZIER, Rex & Nancy	216 Wisteria Av.	Las Vegas,	NV.	89107	702	878 - 3921
095	FULLER, Charlotte	6986 Royal Meadow Pl.	Las Vegas,	NV.	89117	702	362 - 7036
081	GHIZZONNI, Sara	4622 So. Garita St.	Las Vegas,	NV.	89121	702	456 - 4673
044	GOODMAN, Kenneth	111 Wyoming St.	Boulder City,	NV.	89005		
072	GRIFFIN, Joyce	2549 Pine Creek Rd.	Las Vegas,	NV.	89115	702	459 - 5365
112	HAEFNER, Marion Vickers	4318 Goya St.	Las Vegas,	NV.	89121	702	364 - 1099
082	HARDY, Jill	1519 Darlene Way	Boulder City,	NV.	89005	702	293 - 7506
109	HARVEY, Donna Gill	P. O. Box # 12971	Las Vegas,	NV.	89112	702	456 - 1845
129	JONES, John	4618 Cory Pl.	Las Vegas,	NV.	89107	702	870 - 8207
030	KAYE, Maxwell & Bernice	4206 Ridgecrest Dr.	Las Vegas,	NV.	89121	702	451 - 3493
106	KRAEMER, Edith J. "Edie"	4221 Flame Cr.	Las Vegas,	NV.	89108	702	647 - 5745
130	LANG, Frank & Kathleen	6272 Rocky Mtn. Av.	Las Vegas,	NV.	89110	702	452 - 3291
113	LOUIS, Margaret	2215 Marlboro Dr.	Henderson,	NV.	89015	702	458 - 7792
041	MARSHALL, Catherine	1741 Ferrell St.	Las Vegas,	NV.	89106	702	648 - 9081
119	MARSHALL, Joyce	6730 Provcon	Las Vegas,	NV.	89118	702	361 - 6952
107	MILLER, Carol B.	1807 Linden Av.	Las Vegas,	NV.	89101	702	388 - 1666
122	MORRIS, Joyce	6439 Pine St.	Las Vegas,	NV.	89120	702	456 - 4497
078	Mc CARTHY, Madonna	4617 Dover Pl.	Las Vegas,	NV.	89107	702	878 - 1413
140	Mc CLURE, James & Florence	2432 Natalie Av.	Las Vegas,	NV.	89121	702	735 - 7816
100	Mc CORMICK, Robert & Florence	18 Hickory St.	Las Vegas,	NV.	89110	702	452 - 5996
101	Mc CRELESS, Betty	6261 Carey Ave.	Las Vegas,	NV.	89115	702	452 - 9066
002	Mc SWEN, Linda Robinson	1112 Nassau Dr.	Las Vegas,	NV.	89108	702	646 - 2222
097	Mc GREGOR, Nellie	5812 Idle Av.	Las Vegas,	NV.	89107	702	878 - 1974
013	Mc GUIRE, Michael	P. O. Box #13371	Las Vegas,	NV.	89112	702	456 - 7713
115	OSMERA, Gale M.	7200 Bilzzard Ln.	Las Vegas,	NV.	89128	702	363 - 3662
123	PARTS, Charles & Debbie	P. O. Box # 1038	Boulder City,	NV.	89005	702	293 - 3973



040	PARKER, Boots	6328	Pedro Place	Las Vegas,	NV.	89108	702	645 - 5312
116	PETERSON, Dixie L.	5291	Ithaca	Las Vegas,	NV.	89122	702	435 - 8448
028	PICKERING, Thomas	3440	Manzano Cr.	Las Vegas,	NV.	89121	702	735 - 5972
029	PICKERING, Ellen	3440	Manzano Cr.	Las Vegas,	NV.	89121	702	735 - 5972
136	PIERCE, Sue B. Vanderhoof	2769	Vegas Valley Dr.	Las Vegas,	NV.	89121	702	457 - 7251
023	PINKHAM, Burton	205	Rosemeade St.	Las Vegas,	NV.	89106	702	384 - 7602
087	RICKETTS, Kathleen	120	Prince Ln.	Las Vegas,	NV.	89110	702	452 - 7872
114	ROMAY, Lois E.	6541	Brushwood Ln.	Las Vegas,	NV.	89107	702	870 - 0083
104	ROPER, Treva	2629	Reynolds Av.	North Las Vegas,	NV.	89030	702	642 - 4817
086	SAYE, Patricia A.	P. O. Box # 15070		Las Vegas,	NV.	89114	702	798 - SAYE
118	SCHLESINGER, Peggy	4101	Las Lomas	Las Vegas,	NV.	89102	702	876 - 1134
092	SEVERTSON, Ruth	226	Mojave	Henderson,	NV.	89015	702	564 - 1321
088	SHAW, Zylphia A.	10641	Blendia Ln.	Manassa,	VA.	22110		
137	SMITH, Harriett E. Dicus	317	Davenport Ln.	Las Vegas,	NV.	89107	702	870 - 0637
132	SOROFMAN, Ruth	5109	Lytton Av.	Las Vegas,	NV.	89102	702	878 - 9236
098	SPDIKE, Naydean T.	5303	E. Twain Av. #158	Las Vegas,	NV.	89122	702	454 - 6192
111	WALLEY, Walter H.	2650	San Martin Crt.	Las Vegas,	NV.	89121	702	734 - 7024
065	WENTWORTH, Tricia O'Neil	3751	S. Nellis Bl #19	Las Vegas,	NV.	89121	702	451 - 9939
120	WYSS, Arnold & Jeanne	Rt. #4 Box #110		Lurey,	VA.			
133	WOLFE, Karen J.	5381	Ganado Dr.	Las Vegas,	NV.	89103	702	
105	YOUNG, Barbara	42	Colbath	Las Vegas,	NV.	89110	702	459 - 8802
086	ZUBIA, Patricia A. (See SAYE, Patricia A.)							