

THE BIG JOB

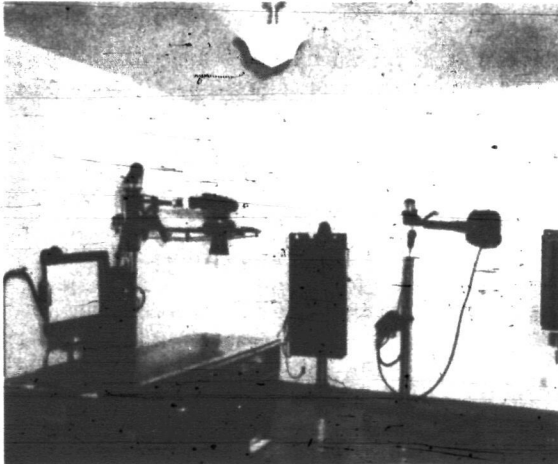
BASIC MAGNESIUM NEWS LETTER

NUMBER 20

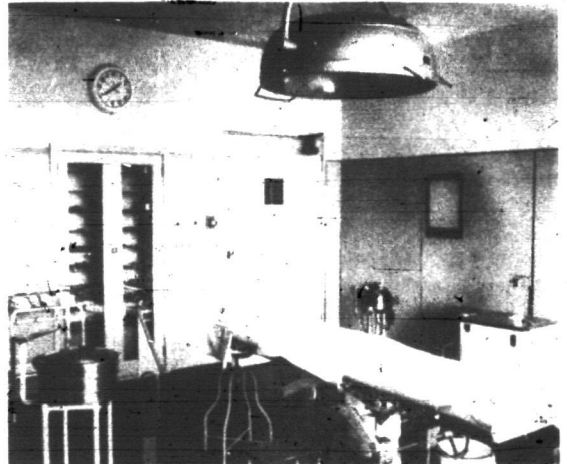
BASIC MAGNESIUM, INCORPORATED, Las Vegas, Nevada

NOVEMBER 12, 1942

HOSPITAL OPENS FOR COMMUNITY SERVICE



The X-ray room at the BMI Hospital is equipped with the most modern apparatus available anywhere.



This is one of the two operating rooms at the new BMI Hospital. An auxiliary lighting system is installed in case of power shutoff. Equipment is the last word.

To Give to Its Patients the Best Medical Care;

To Do Everything Which Will Return the Patient to Health with the Utmost Expedition;

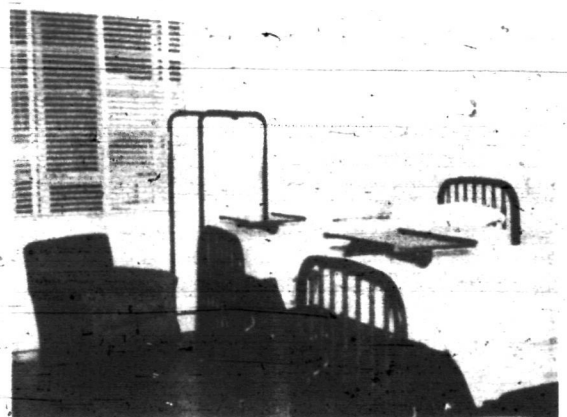
To Do These Things in the Spirit of Kindly, Wholehearted Personal Service.

With these words emblazoned on a plaque, the new BMI Hospital has been opened for service Sunday after a dedication ceremony in which patriotism, medical ethics, and the concern of modern industry for the welfare of its employees featured a simple, impressive ceremony.

The new hospital, though erected primarily to take care of accidents to employees and provide medical service for them, will also be open to families of project employees when need arises and, of course, only when space is available. Charges for these services will be commensurate with services performed, and will conform to rates prevailing in this locality. Physicians on the staff, making calls on patients, will also charge in accordance with rates governing in this area.

RELATIVELY NEW IN INDUSTRY

The big and important thing about the new hospital is that it represents something relatively new in American industry. Embodied in its physical structure and the



Here is one of the cheerful, tastefully decorated two-bed wards. Beds and mattresses are the best money could buy.

apparatus and equipment which it houses, the hospital is a monument to the insistence of modern industry that the health and safety of employees is of vital importance.

EQUIPMENT THE LATEST

No industrial hospital in the world is better equipped to give high type hospital and medical service. In all departments the very latest equipment evolved by medical science has been installed. No pains and no money has been spared to guarantee that men and women on this project will have the best.

THE BIG JOB — BASIC MAGNESIUM NEWS-LETTER

FIRE-PROOF CONSTRUCTION

With a capacity of 50 beds, the new hospital is completely fire-proof with a Universal sprinkling system added as an additional protection. An air-cooling system and hot air heating plant have been installed. Four wings, radiating from a central lobby, contain two and four bedroom wards, lavatories, X-ray rooms, fracture room, delivery room, two operating rooms, and a section for out-patients.

ROOMS ATTRACTIVE

The wards are furnished with the most up-to-date hospital beds and mattresses purchasable. The rooms are bright, airy, and tastefully decorated. Between each two rooms is a spacious utility room for nurses and attendants with shower bath and lavatory for patients.

The X-ray room contains the finest scientific apparatus manufactured.

The operating rooms are the very last word as far as facilities are concerned. They include apparatus for every recognized emergency or need. They are completely electrically equipped. An ultra-modern out-patient department is equipped with apparatus for various types of light treatment and hot water treatment.

FOR PATIENTS' FOOD

The hospital kitchen would bring a glitter to the eyes of any housewife. Dishwashers, mixing and peeling machines, ranges, and large and small refrigerators all run by electricity. The laundry, in which the hospital will do all of its own washing and ironing, features the latest available electrical machinery.

SPLENDID HOME FOR NURSES

Built to accommodate 24, the nurses' home has been built adjacent to the hospital. It is a comfortable and attractively furnished residence.

Ambulance and first aid service will be available 24 hours a day.

SPECIALIST IN CHARGE

Dr. F. E. Clough, BMI Chief Surgeon, has been busy as a tail gunner for months checking details of construction and expediting delivery of technical apparatus. One report has it that he shot down 17 priorities. Dr. Clough knows industrial hospitals. In South Dakota, as Chief Surgeon of the Homestake Mining Company, he pioneered in the field of industrial medicine. He is widely recognized in this field as well as in bone and joint surgery.

Three doctors will assist the Chief Surgeon. They are Doctors Chauncey Baird, A. F. O'Connor, and Ned D. Miller. Mrs. Josephine

Lacy is Superintendent. Eventually there will be 25 nurses and a total of 50 persons on the staff.

AND THIS IS GOOD ADVICE

There isn't a better industrial hospital in the world, but as Safety Engineer Ed Green, in agreement with Dr. Clough, says, "It's better to be safe than saved."

INTER-DENOMINATIONAL CHURCH

Long awaited, widely demanded, an Inter-denomination Church was organized in Basic Townsite last Sunday. Nearly 100 persons attended an organization meeting in the School Auditorium and heard the results of a religious preference survey conducted by the Federal Council of Churches, voted to ask the Council to organize services and a congregation here. Result: Rev. Ray C. Crouch, representing the Council, declared The Community Church organized; officers were elected, an advisory council chosen, one representing each sect; services arranged for next Sunday as follows: Sunday School, 10:30 a.m. Services, 11 a.m. Evening Services, 7:30 p.m.

WHAT'S COOKIN' AT BMI

(Recreational Events at Basic School, unless otherwise specified, are open to all project employees and their families. This includes employees of Basic, and all contractors and sub-contractors. Recreation programs are conducted by the U.S.O. in cooperation with BMI Section of Employee Activities. Sponsorship by other organizations is indicated in the following calendar of events.)

THURSDAY, NOV. 12, School Auditorium. Movies at 7 p.m. and 9 p.m. Adults 25 cents. Children under twelve, 10 cents.

FRIDAY, NOV. 13, School Aud.: High School Dance, 8 to 12 p.m.

SATURDAY, NOV. 14, School Auditorium, 2 p.m. and 4 p.m. Movies for children of school age. Admission 10 cents. No adults.

MONDAY, NOV. 16 School Auditorium, 7:30 p.m. Progressive Bridge party; prizes in Defense Stamps; Admission, 25 cents; Pinochle, Cribbage, Chess, Checkers, Dominoes. Free. Same Event Each Monday, except second Monday of Month.

TUESDAY, NOV. 17. School Auditorium, 7:30 p.m. Badminton. Admission, 25 cents. No hard soled shoes. Adults only. Badminton every Wednesday night.

THURSDAY, NOV. 19. School Auditorium, 7 and 9 p.m. Moving Pictures. Adults, 25 cents; children under 12, 25 cents. Movies every Thursday night.

COULD BE

In Washington They're telling this one. A telegram messenger went into the big new War Department building to deliver a message. He got lost, and came out ten days later a Lieutenant-colonel in the Air Corps.