

# THE BIG JOB

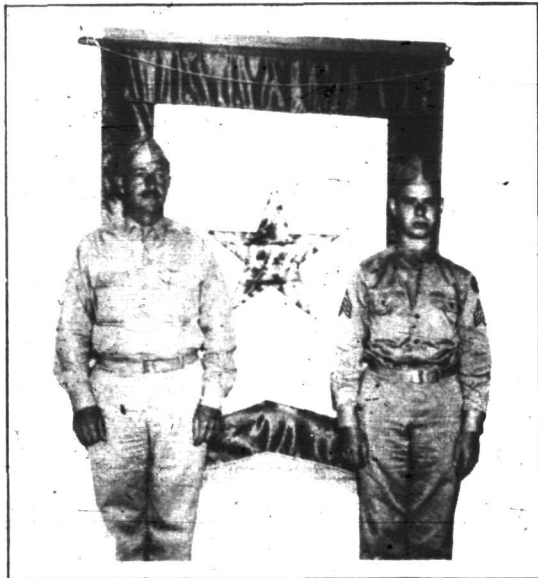
## BASIC MAGNESIUM NEWS LETTER

NUMBER 19

BASIC MAGNESIUM, INCORPORATED, Las Vegas, Nevada

OCTOBER 29 1942

### THE ARMY ISN'T FOOLIN'



**ARMY MEN TO TRAIN GUARDS:** At left is 1st. Lt. James J. M. Colomb from Camp Williston, detailed to the BMI project to train guards. At right is Sergeant Charles E. Faxton, assigned to the project for the same purpose. In the background is the BMI Service Flag, which hangs in the Basic Administration Building lobby in honor of Basic employees who have entered the armed forces. Additions to the numbers on the star are made every week.

**HEADQUARTERS NINTH SERVICE COMMAND  
OFFICE OF THE COMMANDING GENERAL  
FORT DOUGLAS, UTAH**

OCTOBER 16, 1942

Pursuant to directive of the Secretary of War, July 2, 1942, and in accordance with Circular 52, Headquarters Services of Supply, Washington, D.C., August 28, 1942, the guard force of this plant has been voluntarily organized as a civilian auxiliary to the Military Police and made subject to military law under the command of an officer of the Army of the United States. The guard force will be respected and obeyed accordingly.

By Command of Major General JOYCE:

J. J. GRAVES,  
Lt. Colonel, G.S.C.,

### IS THERE AN AMERICAN SHANGRI LA?

Jimmie Doolittle and his boys bombed Tokio-- and the Japs still don't know how they did it. A gang of parachute troops conceivably could land on this project and raise hell with the works before they could be rubbed out.

### PREVENTION IS FIRST ORDER

There ARE saboteurs in the West. The Army knows it. The Navy knows it. The FBI knows it. That's why such painstaking precautions are taken to inspect badges, passes, lunch-buckets and so forth. The first duty of Plant Protection is to PREVENT sabotage-- not to catch saboteurs AFTER the job has been done, and you, maybe, have been killed.

### LOOK AT LIGHT METALS PLANTS

There IS a chance that parachute troops could land on the project--that enemy planes could get this far, that saboteurs could get inside the plant. Official information has revealed that the Nazis have given saboteurs special training in methods of knocking out LIGHT METALS plants, and have been instructed to move against these plants as a first order of business. To meet such possibilities requires a guard force thoroughly trained and under rigid military discipline. That's why the Army has taken over this job of training. That's why the Guard Force has become an official auxiliary of the Army military police. That's why the Army detailed an officer and a sergeant to BMI to take over the work of guard training. And that's why--if plant protection regulations seem a little rigid to us--we ought to be glad and quit squawking. Remember--the ARMY KNOWS WHAT IT'S DOING--and the ARMY ISN'T FOOLING. Let's help--not hinder.

### CARDS, CHECKERS, CHESS

Those gas rationing tickets are going to flutter down on us pretty soon. We're all going to be tied pretty close to where we live--and are going to make our own fun or not have any.

# THE BIG JOB — BASIC MAGNESIUM NEWS-LETTER

So—a program of recreation, subject to revision at any time, has been launched as a starter. A couple of the events have already been staged. Those scheduled for the future follow.

## MONDAY, NOVEMBER 2

School Auditorium, 7:30 p.m. Bridge, chess, checkers, and other games. Admission for players, 25 cents. Net proceeds will help buy cards and tables. Bring a bridge table and a deck of cards. Bring checkers and chess sets. Part of proceeds will provide Defense Stamp prizes for winners in progressive bridge party.

## WEDNESDAY, NOVEMBER 4

School auditorium, 7 p.m. Badminton. Three courts. Admission for players, 25 cents. Spectators free. Birds and racquets furnished.

## THURSDAY, NOVEMBER 5

School Auditorium. Two movie shows, 7 and 9 p.m. Admission, 25 cents for adults; children under twelve, 10 cents.

## SATURDAY, NOVEMBER 7

School Auditorium. Two movie shows for kids only. 2 p.m. and 4 p.m. Admission, 10 cents.

## WEDNESDAY, NOVEMBER 11

School Auditorium, 8 p.m. American Legion Armistice Day dance. Admission 50 cents per person. Proceeds to buy cigarettes for men in armed forces.

## MORE TO COME

Additional programs will be announced weekly in The Big Job. Programs were arranged through co-operation between the school board, USO, and the BMI Section of Employee Activities. As soon as practicable, a recreation council representing all interested groups will be organized—and net proceeds from various events will go to make up a community recreation fund. Arrangements for a community dance in the auditorium every Saturday night are currently being made. Friday nights are reserved for school parties.

## NIGHT SCHOOL WILL START

In response to scores of requests, Roy G. Petrie, school superintendent has made arrangements for night school classes in the

Townsite educational institution. Advance registrations are necessary. Persons desiring to attend night classes are requested to register at the school office Friday night, October 30th at 7:30. Fifteen persons must register in each class before it can be started.

## WANTED: VOLUNTEER LIBRARIANS

Several women in the Townsite have volunteered to serve as part-time librarians in the temporary library near the school. Several more are needed. Those interested, please call Martin Parke at Basic 24.

## WATCH OUT, YOU GOBLINS

Everything at the plant, the townsite, the trailer camp, Anderson's camp is owned by Uncle Sam. This is wartime. Destruction of government property during a war is sabotage. Parents should impress this on their children. The stage is set for a good time on Hallowe'en for all the kids in the area, including Pittman. The High School student council, with the help of the Legion and the USO has taken charge of a party for the youngsters in Grades 1 to 6. Costume parade will start at Water Street and Victory Road at 6 p.m. There will be movies and contests at the school auditorium. At 8 o'clock the older students will start their party—also costume, with prizes.

## CO-OPERATIVE CONCERT ASSOCIATION

Many employees on the BMI project have expressed enthusiasm over the musical series sponsored in Las Vegas by the Cooperative Concert Association. Three concerts have been arranged with the possibility that a fourth may be scheduled. No tickets will be sold at individual concerts. Persons interested in Memberships for the season admitting them to all concerts should contact Mrs. Annelle M. Sherburne, Room D-11, or ext. 183.

## LANDSCAPING BEGINS

Four and one half million square feet of grass. That calls for several carloads of seed, 8,000 cubic yards of top soil and tons of fertilizer. That's what it takes to provide for the initial landscaping in Basic Townsite which has already been started. Special instructions are being sent to all householders advising them as to the most effective methods of watering the new lawn.